

ZN861 Rabbit pAb

CatalogNo: YT6807

| Key Features

Host Species

- Rabbit

Reactivity

- Human

Applications

- IHC,IF

MW

- 12kD (Calculated)

Isotype

- IgG

| Recommended Dilution Ratios

IHC 1:50-200

IF 1:50-200

| Storage

Storage* -15°C to -25°C/1 year(Do not lower than -25°C)

Formulation Liquid in PBS containing 50% glycerol, 0.5% BSA and 0.02% sodium azide.

| Basic Information

Clonality Polyclonal

| Immunogen Information

Immunogen Synthesized peptide derived from human ZN861 AA range: 2-52

Specificity This antibody detects endogenous levels of ZN861 at Human

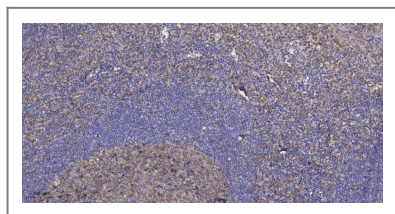
| Target Information

Gene name ZNF861P

Protein Name ZN861

Organism	Gene ID	UniProt ID
Human		O60384 ;

| Validation Data



Immunohistochemical analysis of paraffin-embedded human tonsil. 1, Antibody was diluted at 1:200(4° overnight). 2, Tris-EDTA,pH9.0 was used for antigen retrieval. 3,Secondary antibody was diluted at 1:200(room temperature, 30min).

| Contact information

Orders: order@immunoway.com
Support: tech@immunoway.com
Telephone: 877-594-3616 (Toll Free), 408-747-0185
Website: http://www.immunoway.com
Address: 2200 Ringwood Ave San Jose, CA 95131 USA



Please scan the QR code
to access additional
product information:
ZN861 Rabbit pAb

For Research Use Only. Not for Use in Diagnostic Procedures.

[Antibody](#) | [ELISA Kits](#) | [Protein](#) | [Reagents](#)