

## MLXPL Rabbit pAb

CatalogNo: YT6797

### Key Features

#### Host Species

- Rabbit

#### Reactivity

- Human, Mouse, Rat

#### Applications

- WB, ELISA, IHC

#### MW

- 94kD (Calculated)

#### Isotype

- IgG

### Recommended Dilution Ratios

WB 1:500-2000

IHC 1:50-300

ELISA 1:2000-20000

### Storage

#### Storage\*

-15°C to -25°C/1 year (Do not lower than -25°C)

#### Formulation

Liquid in PBS containing 50% glycerol, 0.5% BSA and 0.02% sodium azide.

### Basic Information

#### Clonality

Polyclonal

### Immunogen Information

#### Immunogen

Synthesized peptide derived from human MLXPL AA range: 303-353

#### Specificity

This antibody detects endogenous levels of MLXPL at Human/Mouse/Rat

### Target Information

#### Gene name

MLXIPL BHLHD14 MIO WBSCR14

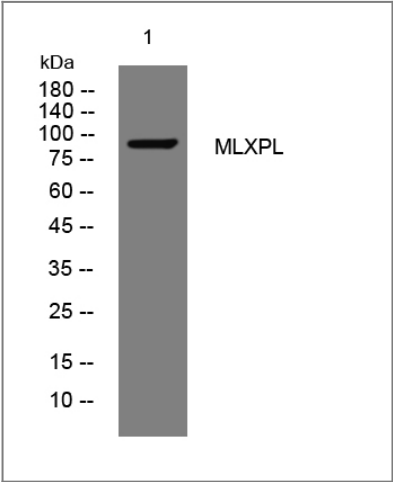
<b>Protein Name</b>	MLXPL		
	<b>Organism</b>	<b>Gene ID</b>	<b>UniProt ID</b>
	Human	<a href="#">51085;</a>	<a href="#">Q9NP71;</a>
	Mouse	<a href="#">58805;</a>	<a href="#">Q99MZ3;</a>
	Rat	<a href="#">171078;</a>	<a href="#">Q8VIP2;</a>

**Cellular Localization** Nucleus.

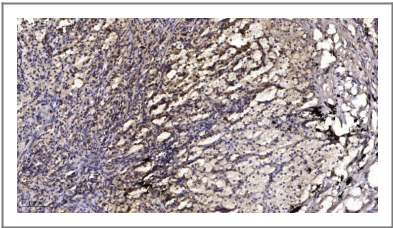
**Tissue specificity** Expressed in liver, heart, kidney, cerebellum and intestinal tissues.

**Function** Disease:Haploinsufficiency of WBSCR14 may be the cause of certain cardiovascular and musculo-skeletal abnormalities observed in Williams-Beuren syndrome (WBS) [MIM:194050]. WBS is a rare developmental disorder. It is a contiguous gene deletion syndrome involving genes from chromosome band 7q11.23.,Function:Transcriptional repressor. Binds to the canonical and non-canonical E box sequences 5'-CACGTG-3'.similarity:Contains 1 basic helix-loop-helix (bHLH) domain.,subunit:Binds DNA as a heterodimer with TCFL4/MLX.,tissue specificity:Expressed in liver, heart, kidney, cerebellum and intestinal tissues.,

## Validation Data



Western blot analysis of lysates from HeLa cells, primary antibody was diluted at 1:1000, 4°over night



Immunohistochemical analysis of paraffin-embedded human Squamous cell carcinoma of lung. 1, Antibody was diluted at 1:200(4° overnight). 2, Tris-EDTA,pH9.0 was used for antigen retrieval. 3,Secondary antibody was diluted at 1:200(room temperature, 45min).

## Contact information

Orders: order@immunoway.com  
Support: tech@immunoway.com  
Telephone: 877-594-3616 (Toll Free), 408-747-0185  
Website: <http://www.immunoway.com>  
Address: 2200 Ringwood Ave San Jose, CA 95131 USA



Please scan the QR code  
to access additional  
product information:  
**MLXPL Rabbit pAb**

---

For Research Use Only. Not for Use in Diagnostic Procedures.

[Antibody](#) | [ELISA Kits](#) | [Protein](#) | [Reagents](#)