

SO6A1 Rabbit pAb

CatalogNo: YT6770

Key Features

Host Species

- Rabbit

Reactivity

- Human

Applications

- WB, IHC

MW

- 79kD (Calculated)

Isotype

- IgG

Recommended Dilution Ratios

WB 1:500-2000

IHC 1:50-300

Storage

Storage* -15°C to -25°C/1 year (Do not lower than -25°C)

Formulation Liquid in PBS containing 50% glycerol, 0.5% BSA and 0.02% sodium azide.

Basic Information

Clonality Polyclonal

Immunogen Information

Immunogen Synthesized peptide derived from human SO6A1 AA range: 213-263

Specificity This antibody detects endogenous levels of SO6A1 at Human

Target Information

Gene name SLC06A1 OATP6A1 SLC21A19

Protein Name SO6A1

Organism

Human

Gene ID

[133482](#);

UniProt ID

[Q86UG4](#);

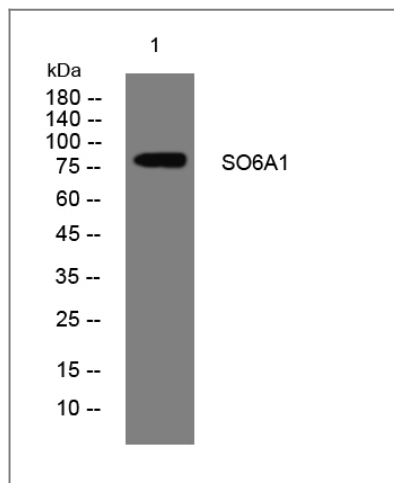
**Cellular
Localization**

Cell membrane; Multi-pass membrane protein.

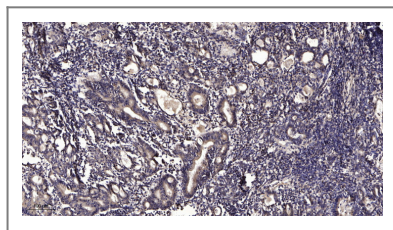
Tissue specificity Strongly expressed in testis. Weakly expressed in spleen, brain, fetal brain and placenta. Detected in lung tumors.

Function similarity:Belongs to the organo anion transporter (TC 2.A.60) family.,tissue specificity:Strongly expressed in testis. Weakly expressed in spleen, brain, fetal brain and placenta. Detected in lung tumors.,

Validation Data



Western blot analysis of lysates from 293T cells, primary antibody was diluted at 1:1000, 4° over night



Immunohistochemical analysis of paraffin-embedded human Gastric adenocarcinoma. 1, Antibody was diluted at 1:200(4° overnight). 2, Tris-EDTA,pH9.0 was used for antigen retrieval. 3,Secondary antibody was diluted at 1:200(room temperature, 45min).

Contact information

Orders: order@immunoway.com
Support: tech@immunoway.com
Telephone: 877-594-3616 (Toll Free), 408-747-0185
Website: <http://www.immunoway.com>
Address: 2200 Ringwood Ave San Jose, CA 95131 USA



Please scan the QR code to access additional product information:
SO6A1 Rabbit pAb

