

MEX3D Rabbit pAb

CatalogNo: YT6764

Key Features

Host Species

- Rabbit

Reactivity

- Human, Mouse

Applications

- WB, IHC

MW

- 72kD (Calculated)

Isotype

- IgG

Recommended Dilution Ratios

WB 1:500-2000

IHC 1:50-300

Storage

Storage* -15°C to -25°C/1 year (Do not lower than -25°C)

Formulation Liquid in PBS containing 50% glycerol, 0.5% BSA and 0.02% sodium azide.

Basic Information

Clonality Polyclonal

Immunogen Information

Immunogen Synthesized peptide derived from human MEX3D AA range: 121-171

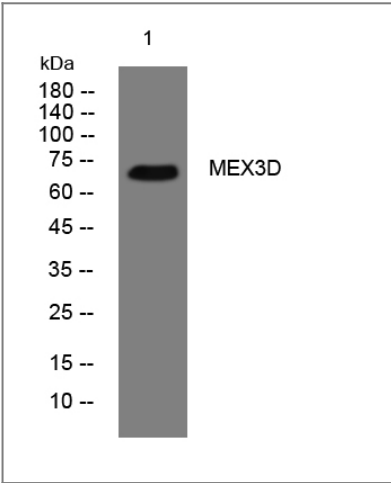
Specificity This antibody detects endogenous levels of MEX3D at Human/Mouse

Target Information

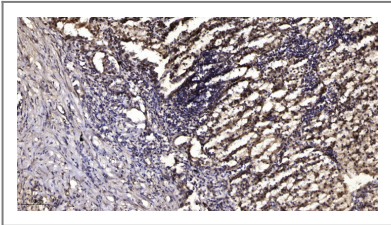
Gene name MEX3D KIAA2031 RKHD1 RNF193

Protein Name	MEX3D		
	Organism	Gene ID	UniProt ID
	Human	399664 ;	Q86XN8 ;
	Mouse	237400 ;	Q3UE17 ;
Cellular Localization	Cytoplasm . Nucleus . Predominantly expressed in the cytoplasm and shuttles between the cytoplasm and the nucleus through the CRM1 export pathway. .		
Tissue specificity	Ubiquitously expressed in all the cell lines and tissues tested.		
Function	Domain:Binds RNA through its KH domains.,Function:RNA binding protein, may be involved in post-transcriptional regulatory mechanisms.,PTM:Phosphorylated.,similarity:Contains 1 KH domain.,similarity:Contains 1 RING-type zinc finger.,similarity:Contains 2 KH domains.,subcellular location:Predominantly expressed in the cytoplasm and shuttles between the cytoplasm and the nucleus through the CRM1 export pathway.,tissue specificity:Ubiquitously expressed in all the cell lines and tissues tested.,		

| Validation Data



Western blot analysis of lysates from 3T3 cells, primary antibody was diluted at 1:1000, 4°over night



Immunohistochemical analysis of paraffin-embedded human Squamous cell carcinoma of lung. 1, Antibody was diluted at 1:200(4° overnight). 2, Tris-EDTA,pH9.0 was used for antigen retrieval. 3,Secondary antibody was diluted at 1:200(room temperature, 45min).

| Contact information

Orders: order@immunoway.com
Support: tech@immunoway.com
Telephone: 877-594-3616 (Toll Free), 408-747-0185
Website: http://www.immunoway.com
Address: 2200 Ringwood Ave San Jose, CA 95131 USA



Please scan the QR code
to access additional
product information:
MEX3D Rabbit pAb

For Research Use Only. Not for Use in Diagnostic Procedures.

[Antibody](#) | [ELISA Kits](#) | [Protein](#) | [Reagents](#)