

ITIH6 Rabbit pAb

CatalogNo: YT6763

Key Features

Host Species

- Rabbit

Reactivity

- Human

Applications

- WB,ELISA,IHC

MW

- 144kD (Calculated)

Isotype

- IgG

Recommended Dilution Ratios

WB 1:500-2000

IHC 1:50-300

ELISA 1:2000-20000

Storage

Storage* -15°C to -25°C/1 year(Do not lower than -25°C)

Formulation Liquid in PBS containing 50% glycerol, 0.5% BSA and 0.02% sodium azide.

Basic Information

Clonality Polyclonal

Immunogen Information

Immunogen Synthesized peptide derived from human ITIH6 AA range: 152-202

Specificity This antibody detects endogenous levels of ITIH6 at Human

Target Information

Gene name ITIH6 ITIH5L UNQ6369/PRO21074

Protein Name ITIH6

Organism

Gene ID

UniProt ID

Human

[347365;](#)

[Q6UXX5;](#)

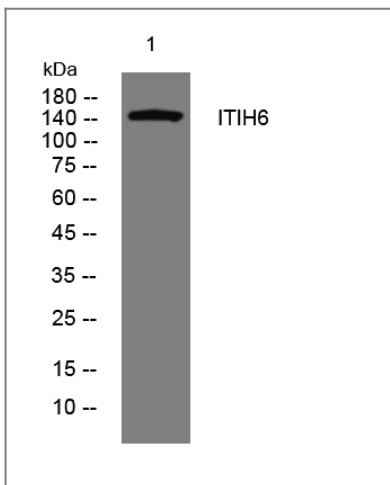
**Cellular
Localization**

Secreted .

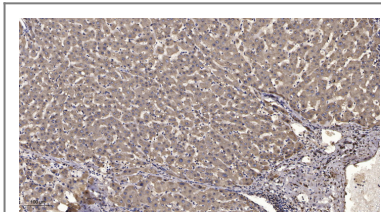
Function

similarity:Belongs to the ITIH family.,similarity:Contains 1 VWFA domain.,

Validation Data



Western blot analysis of lysates from U2OS cells, primary antibody was diluted at 1:1000, 4° over night



Immunohistochemical analysis of paraffin-embedded human liver cancer. 1, Antibody was diluted at 1:200(4° overnight). 2, Tris-EDTA,pH9.0 was used for antigen retrieval. 3,Secondary antibody was diluted at 1:200(room temperature, 45min).

Contact information

Orders: order@immunoway.com
Support: tech@immunoway.com
Telephone: 877-594-3616 (Toll Free), 408-747-0185
Website: <http://www.immunoway.com>
Address: 2200 Ringwood Ave San Jose, CA 95131 USA



Please scan the QR code to access additional product information:
ITIH6 Rabbit pAb