

ZN487 Rabbit pAb

CatalogNo: YT6758

Key Features

Host Species

- Rabbit

Reactivity

- Human

Applications

- WB

MW

- 49kD (Calculated)

Isotype

- IgG

Storage

Storage* -15°C to -25°C/1 year(Do not lower than -25°C)**Formulation** Liquid in PBS containing 50% glycerol, 0.5% BSA and 0.02% sodium azide.

Recommended Dilution Ratios

WB 1:500-2000

Basic Information

Clonality Polyclonal

Immunogen Information

Immunogen Synthesized peptide derived from human ZN487 AA range: 61-111**Specificity** This antibody detects endogenous levels of ZN487 at Human

Target Information

Gene name ZNF487P KRBO1 ZNF487

Protein Name ZN487

Organism

Gene ID

UniProt ID

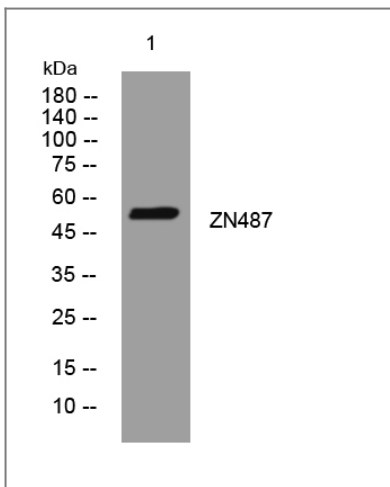
Human

[B1APH4](#);

Cellular Localization

Nucleus .

Validation Data



Western blot analysis of lysates from A431 cells, primary antibody was diluted at 1:1000, 4° over night

Contact information

Orders: order@immunoway.com
Support: tech@immunoway.com
Telephone: 877-594-3616 (Toll Free), 408-747-0185
Website: <http://www.immunoway.com>
Address: 2200 Ringwood Ave San Jose, CA 95131 USA



Please scan the QR code to access additional product information:
ZN487 Rabbit pAb

For Research Use Only. Not for Use in Diagnostic Procedures.

[Antibody](#) | [ELISA Kits](#) | [Protein](#) | [Reagents](#)