

## NBPFG Rabbit pAb

CatalogNo: YT6753

### Key Features

#### Host Species

- Rabbit

#### Reactivity

- Human, Rat, Mouse,

#### Applications

- WB, IHC

#### MW

- 74kD (Calculated)

#### Isotype

- IgG

### Recommended Dilution Ratios

WB 1:500-2000

IHC 1:50-300

### Storage

**Storage\*** -15°C to -25°C/1 year (Do not lower than -25°C)

**Formulation** Liquid in PBS containing 50% glycerol, 0.5% BSA and 0.02% sodium azide.

### Basic Information

**Clonality** Polyclonal

### Immunogen Information

**Immunogen** Synthesized peptide derived from human NBPFG AA range: 49-99

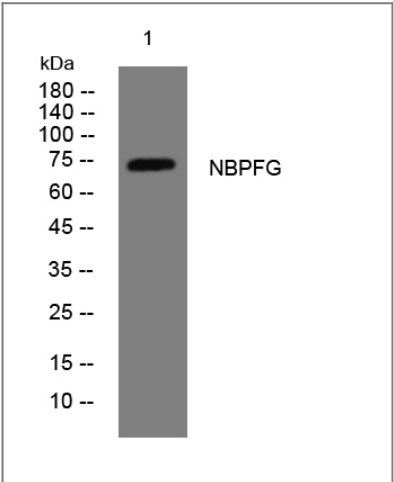
**Specificity** This antibody detects endogenous levels of NBPFG at Human

### Target Information

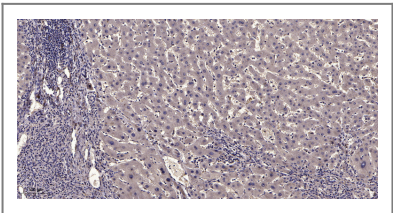
**Gene name** NBPFG

Protein Name	NBPFG		
	Organism	Gene ID	UniProt ID
	Human		<a href="#">Q5SXJ2</a> ;
Cellular Localization	cytoplasm,		
Function	miscellaneous:Encoded by one of the numerous copies of NBPF genes clustered in the p36, p12 and q21 region of the chromosome 1.,similarity:Belongs to the NBPF family.,similarity:Contains 10 NBPF domains.,similarity:Contains 2 NBPF domains.,similarity:Contains 3 NBPF domains.,similarity:Contains 6 NBPF domains.,similarity:Contains 7 NBPF domains.,similarity:Contains 8 NBPF domains.,tissue specificity:Expressed in a neuroblastoma cell line.,tissue specificity:Expressed in spinal cord.,tissue specificity:Expressed in spleen and fetal liver.,tissue specificity:Expressed in the mammary gland.,tissue specificity:Ubiquitously expressed with a higher expression observed in breast and liver. Also expressed in neuroblastoma cell line.,tissue specificity:Widely expressed. The only tissue which shows a weak expression is kidney.,		

| Validation Data



Western blot analysis of lysates from Hela cells, primary antibody was diluted at 1:1000, 4°over night



Immunohistochemical analysis of paraffin-embedded human liver cancer. 1, Antibody was diluted at 1:200(4° overnight). 2, Tris-EDTA,pH9.0 was used for antigen retrieval. 3,Secondary antibody was diluted at 1:200(room temperature, 45min).

| Contact information

Orders: order@immunoway.com  
Support: tech@immunoway.com  
Telephone: 877-594-3616 (Toll Free), 408-747-0185  
Website: http://www.immunoway.com  
Address: 2200 Ringwood Ave San Jose, CA 95131 USA



Please scan the QR code  
to access additional  
product information:  
**NBPFG Rabbit pAb**

---

For Research Use Only. Not for Use in Diagnostic Procedures.

[Antibody](#) | [ELISA Kits](#) | [Protein](#) | [Reagents](#)