

TRI69 Rabbit pAb

CatalogNo: YT6746

Key Features

Host Species

- Rabbit

Reactivity

- Human, Mouse, Rat

Applications

- WB

MW

- 55kD (Calculated)

Isotype

- IgG

Storage

Storage* -15°C to -25°C/1 year (Do not lower than -25°C)

Formulation Liquid in PBS containing 50% glycerol, 0.5% BSA and 0.02% sodium azide.

Recommended Dilution Ratios

WB 1:500-2000

Basic Information

Clonality Polyclonal

Immunogen Information

Immunogen Synthesized peptide derived from human TRI69 AA range: 202-252

Specificity This antibody detects endogenous levels of TRI69 at Human/Mouse/Rat

Target Information

Gene name TRIM69 RNF36 HSD-34 HSD34

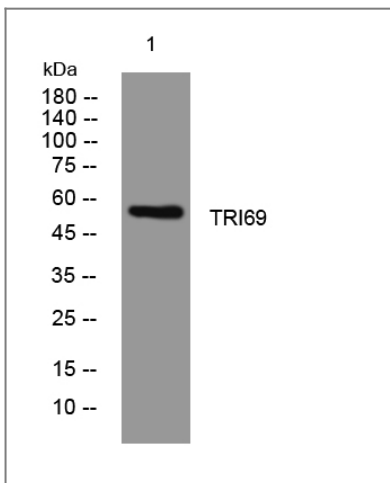
Protein Name TRI69

Organism	Gene ID	UniProt ID
Human	140691 ;	Q86WT6 ;
Mouse	70928 ;	Q80X56 ;
Rat	311373 ;	Q5BK82 ;

Cellular Localization Cytoplasm . Nucleus . Nucleus speckle .

Function Function:May play a role in apoptosis.,PTM:Phosphorylated. Phosphorylation is necessary for nuclear localization.,similarity:Belongs to the TRIM/RBCC family.,similarity:Contains 1 B30.2/SPRY domain.,similarity:Contains 1 RING-type zinc finger.,subunit:Interacts with PML.,

Validation Data



Western blot analysis of lysates from AD293 cells, primary antibody was diluted at 1:1000, 4° over night

Contact information

Orders: order@immunoway.com
Support: tech@immunoway.com
Telephone: 877-594-3616 (Toll Free), 408-747-0185
Website: <http://www.immunoway.com>
Address: 2200 Ringwood Ave San Jose, CA 95131 USA



Please scan the QR code to access additional product information:
TRI69 Rabbit pAb