

## ZBT25 Rabbit pAb

CatalogNo: YT6741

### | Key Features

#### Host Species

- Rabbit

#### Reactivity

- Human

#### Applications

- WB

#### MW

- 48kD (Calculated)

#### Isotype

- IgG

### | Recommended Dilution Ratios

WB 1:500-2000

### | Storage

**Storage\*** -15°C to -25°C/1 year(Do not lower than -25°C)

**Formulation** Liquid in PBS containing 50% glycerol, 0.5% BSA and 0.02% sodium azide.

### | Basic Information

**Clonality** Polyclonal

### | Immunogen Information

**Immunogen** Synthesized peptide derived from human ZBT25 AA range: 249-299

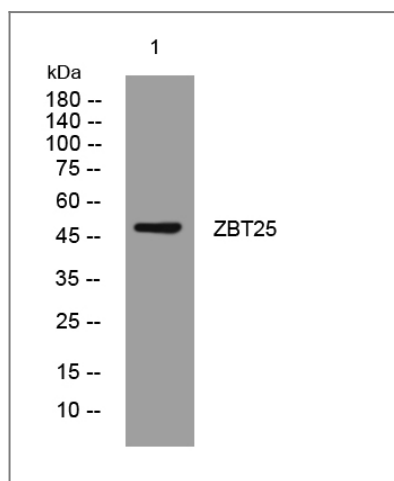
**Specificity** This antibody detects endogenous levels of ZBT25 at Human

### | Target Information

**Gene name** ZBTB25 C14orf51 KUP ZNF46

<b>Protein Name</b>	ZBT25		
	<b>Organism</b>	<b>Gene ID</b>	<b>UniProt ID</b>
	Human	<a href="#">7597</a> ;	<a href="#">P24278</a> ;
<b>Cellular Localization</b>	Nucleus.		
<b>Tissue specificity</b>	Expressed mainly in hematopoietic cells and testis.		
<b>Function</b>	Function:May be involved in transcriptional regulation.,similarity:Contains 1 BTB (POZ) domain.,similarity:Contains 2 C2H2-type zinc fingers.,tissue specificity:Expressed mainly in hematopoietic cells and testis.,		

## Validation Data



Western blot analysis of lysates from U2OS cells, primary antibody was diluted at 1:1000, 4°over night

## Contact information

Orders: [order@immunoway.com](mailto:order@immunoway.com)  
 Support: [tech@immunoway.com](mailto:tech@immunoway.com)  
 Telephone: 877-594-3616 (Toll Free), 408-747-0185  
 Website: <http://www.immunoway.com>  
 Address: 2200 Ringwood Ave San Jose, CA 95131 USA



Please scan the QR code to access additional product information:  
**ZBT25 Rabbit pAb**