

## RASF5 Rabbit pAb

CatalogNo: YT6737

### Key Features

#### Host Species

- Rabbit

#### Reactivity

- Human, Mouse, Rat

#### Applications

- WB, IF, ELISA, IHC

#### MW

- 46kD (Calculated)

#### Isotype

- IgG

### Recommended Dilution Ratios

**WB 1:500-2000**

**IF/ICC 1:50-200**

**ELISA 1:2000-20000**

**IHC 1:50-200**

### Storage

#### Storage\*

-15°C to -25°C/1 year (Do not lower than -25°C)

#### Formulation

Liquid in PBS containing 50% glycerol, 0.5% BSA and 0.02% sodium azide.

### Basic Information

#### Clonality

Polyclonal

### Immunogen Information

#### Immunogen

Synthesized peptide derived from human RASF5 AA range: 234-284

#### Specificity

This antibody detects endogenous levels of RASF5 at Human/Mouse/Rat

### Target Information

**Gene name** RASSF5 NORE1 RAPL

**Protein Name** RASF5

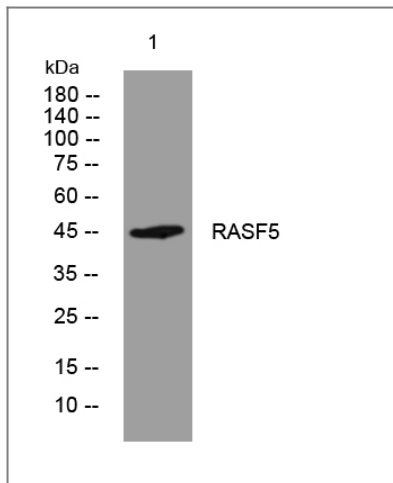
Organism	Gene ID	UniProt ID
Human	<a href="#">83593</a> ;	<a href="#">Q8WWW0</a> ;
Mouse	<a href="#">54354</a> ;	<a href="#">Q5EBH1</a> ;
Rat	<a href="#">54355</a> ;	<a href="#">Q35141</a> ;

**Cellular Localization** Cytoplasm. Cytoplasm, cytoskeleton. Isoform 2 is mainly located in the perinuclear region of unstimulated primary T-cells. Upon stimulation translocates to the leading edge and colocalizes with ITGAL/LFA-1 in the peripheral zone of the immunological synapse. Isoform 2 is localized to growing microtubules in vascular endothelial cells and is dissociated from microtubules by activated RAP1A.

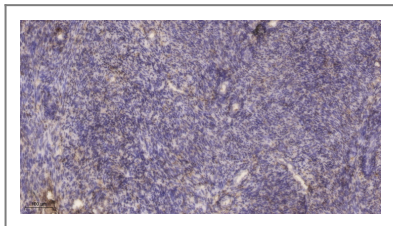
**Tissue specificity** Widely expressed. Frequently down-regulated in lung tumor cell lines and primary lung tumors.

**Function** Caution:Has been termed RASSF3 by Ref.3.,Function:Potential tumor suppressor. Seems to be involved in lymphocyte adhesion by linking RAP1A activation upon T cell receptor or chemokine stimulation to integrin activation. Isoform 2 stimulates lymphocyte polarization and the patch-like distribution of ITGAL/LFA-1, resulting in an enhanced adhesion to ICAM1. Together with RAP1A may participate in regulation of microtubule growth. The association of isoform 2 with activated RAP1A is required for directional movement of endothelial cells during wound healing. May be involved in regulation of Ras apoptotic function. The RASSF5-STK4 complex may mediate HRAS1 and KRAS induced apoptosis.,similarity:Contains 1 phorbol-ester/DAG-type zinc finger.,similarity:Contains 1 Ras-associating domain.,similarity:Contains 1 SARAH domain.,subcellular location:Isoform 2 is mainly located in the perinuclear region of unstimulated primary T cells. Upon stimulation translocates to the leading edge and colocalizes with ITGAL/LFA-1 in the peripheral zone of the immunological synapse. Isoform 2 is localized to growing microtubules in vascular endothelial cells and is dissociated from microtubules by activated RAP1A.,subunit:Interacts directly with activated HRAS1; a RASSF5-STK4 complex probably associates with activated HRAS1. Interacts with KRAS. Probably interacts with Ras-like GTPases RRAS, RRAS2, MRAS, RAP1B, RAP2A and RALA. Can self-associate. Interacts with RSSF1 isoform A. The RSSF1 isoform A-RSSF5 heterodimer probably mediates the association of RSSF1 with HRAS1 (By similarity). Isoform 2 interacts with activated RAP1A and ITGAL/LFA-1. Binds STK4/MST1, inhibiting STK4 autoactivation.,tissue specificity:Widely expressed. Frequently down-regulated in lung tumor cell lines and primary lung tumors.,

## | Validation Data



Western blot analysis of lysates from Hela cells, primary antibody was diluted at 1:1000, 4° over night



Immunohistochemical analysis of paraffin-embedded human uterus. 1, Antibody was diluted at 1:200(4° overnight). 2, Tris-EDTA,pH9.0 was used for antigen retrieval. 3,Secondary antibody was diluted at 1:200(room temperature, 45min).

## Contact information

Orders: [order@immunoway.com](mailto:order@immunoway.com)  
 Support: [tech@immunoway.com](mailto:tech@immunoway.com)  
 Telephone: 877-594-3616 (Toll Free), 408-747-0185  
 Website: <http://www.immunoway.com>  
 Address: 2200 Ringwood Ave San Jose, CA 95131 USA



Please scan the QR code to access additional product information:  
**RASF5 Rabbit pAb**

For Research Use Only. Not for Use in Diagnostic Procedures.

[Antibody](#) | [ELISA Kits](#) | [Protein](#) | [Reagents](#)