

## OR1P1 Rabbit pAb

CatalogNo: YT6727

### Key Features

**Host Species**

- Rabbit

**Reactivity**

- Human

**Applications**

- WB

**MW**

- 36kD (Calculated)

**Isotype**

- IgG

### Storage

**Storage\*** -15°C to -25°C/1 year (Do not lower than -25°C)**Formulation** Liquid in PBS containing 50% glycerol, 0.5% BSA and 0.02% sodium azide.

### Recommended Dilution Ratios

**WB 1:500-2000**

### Basic Information

**Clonality** Polyclonal

### Immunogen Information

**Immunogen** Synthesized peptide derived from human OR1P1 AA range: 65-115**Specificity** This antibody detects endogenous levels of OR1P1 at Human

### Target Information

**Gene name** OR1P1 OR1P1P

**Protein Name** OR1P1

**Organism**

**Gene ID**

**UniProt ID**

Human

[Q8NH06](#);

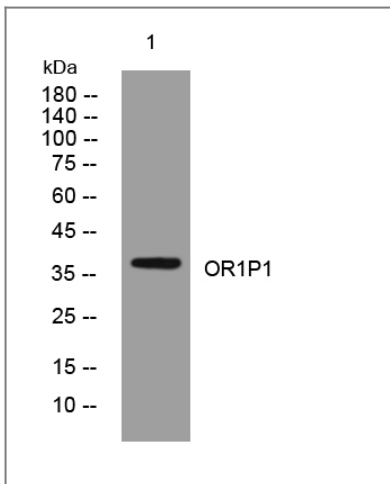
**Cellular Localization**

Cell membrane; Multi-pass membrane protein.

**Function**

Function:Odorant receptor .,polymorphism:A stop codon in the gene coding for this protein at position Ala-185 is responsible for functional diversity thus producing a pseudogene.. The stop codon is more frequent in non-Africans than in African-Americans.,similarity:Belongs to the G-protein coupled receptor 1 family.,

## Validation Data



Western blot analysis of lysates from HeLa cells, primary antibody was diluted at 1:1000, 4°over night

## Contact information

Orders: [order@immunoway.com](mailto:order@immunoway.com)  
Support: [tech@immunoway.com](mailto:tech@immunoway.com)  
Telephone: 877-594-3616 (Toll Free), 408-747-0185  
Website: <http://www.immunoway.com>  
Address: 2200 Ringwood Ave San Jose, CA 95131 USA



Please scan the QR code to access additional product information:  
**OR1P1 Rabbit pAb**

For Research Use Only. Not for Use in Diagnostic Procedures.

[Antibody](#) | [ELISA Kits](#) | [Protein](#) | [Reagents](#)