

## GALE Rabbit pAb

CatalogNo: YT6716

### | Key Features

#### Host Species

- Rabbit

#### Reactivity

- Human, Mouse, Rat

#### Applications

- WB

#### MW

- 38kD (Calculated)

#### Isotype

- IgG

### | Recommended Dilution Ratios

WB 1:500-2000

### | Storage

#### Storage\*

-15°C to -25°C/1 year (Do not lower than -25°C)

#### Formulation

Liquid in PBS containing 50% glycerol, 0.5% BSA and 0.02% sodium azide.

### | Basic Information

#### Clonality

Polyclonal

### | Immunogen Information

#### Immunogen

Synthesized peptide derived from human GALE AA range: 104-154

#### Specificity

This antibody detects endogenous levels of GALE at Human/Mouse/Rat

### | Target Information

#### Gene name

GALE

Protein Name

GALE

Organism	Gene ID	UniProt ID
Human	<a href="#">2582;</a>	<a href="#">Q14376;</a>
Mouse	<a href="#">74246;</a>	<a href="#">Q8R059;</a>
Rat		<a href="#">P18645;</a>

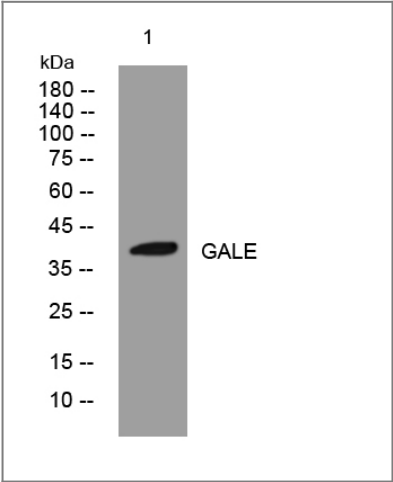
Cellular Localization

cytosol,extracellular exosome,

Function

Catalytic activity:UDP-glucose = UDP-galactose.,cofactor:NAD.,Disease:Defects in GALE are the cause of epimerase-deficiency galactosemia (EDG) [MIM:230350]; also known as galactosemia type 3. Clinical features include early-onset cataracts, liver damage, deafness and mental retardation. There are two clinically distinct forms of EDG. (1) A benign, or 'peripheral' form with no detectable GALE activity in red blood cells and characterized by mild symptoms. Some patients may suffer no symptoms beyond raised levels of galactose-1-phosphate in the blood. (2) A much rarer 'generalized' form with undetectable levels of GALE activity in all tissues and resulting in severe features such as restricted growth and mental development.,Function:Catalyzes two distinct but analogous reactions: the epimerization of UDP-glucose to UDP-galactose and the epimerization of UDP-N-acetylglucosamine to UDP-N-acetylgalactosamine.,pathway:Carbohydrate metabolism; galactose metabolism.,similarity:Belongs to the sugar epimerase family.,subunit:Homodimer.,

Validation Data



Western blot analysis of lysates from PC-12 cells, primary antibody was diluted at 1:1000, 4°over night

Contact information

Orders: order@immunoway.com  
Support: tech@immunoway.com  
Telephone: 877-594-3616 (Toll Free), 408-747-0185  
Website: http://www.immunoway.com  
Address: 2200 Ringwood Ave San Jose, CA 95131 USA



Please scan the QR code  
to access additional  
product information:  
**GALE Rabbit pAb**

---

For Research Use Only. Not for Use in Diagnostic Procedures.

[Antibody](#) | [ELISA Kits](#) | [Protein](#) | [Reagents](#)