

RCBT2 Rabbit pAb

CatalogNo: YT6715

Key Features

Host Species

- Rabbit

Reactivity

- Human, Mouse, Rat

Applications

- WB, ELISA, IHC

MW

- 61kD (Calculated)

Isotype

- IgG

Recommended Dilution Ratios

WB 1:500-2000

IHC 1:50-300

ELISA 1:2000-20000

Storage

Storage*

-15°C to -25°C/1 year (Do not lower than -25°C)

Formulation

Liquid in PBS containing 50% glycerol, 0.5% BSA and 0.02% sodium azide.

Basic Information

Clonality

Polyclonal

Immunogen Information

Immunogen

Synthesized peptide derived from human RCBT2 AA range: 53-103

Specificity

This antibody detects endogenous levels of RCBT2 at Human/Mouse/Rat

Target Information

Gene name

RCBTB2 CHC1L RLG

Protein Name RCBT2

Organism	Gene ID	UniProt ID
Human	1102 ;	O95199 ;
Mouse	105670 ;	Q99LJ7 ;
Rat	290363 ;	Q6P798 ;

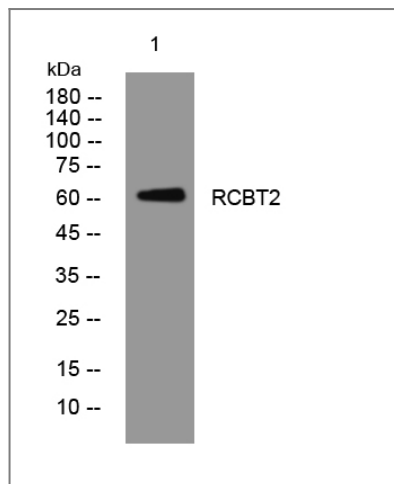
Cellular Localization

Cytoplasmic vesicle, secretory vesicle, acrosome . Mainly found in the acrosomal cap region. .

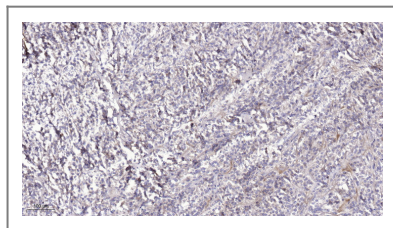
Function

similarity:Contains 1 BTB (POZ) domain.,similarity:Contains 2 BTB (POZ) domains.,similarity:Contains 6 RCC1 repeats.,

Validation Data



Western blot analysis of lysates from A431 cells, primary antibody was diluted at 1:1000, 4° over night



Immunohistochemical analysis of paraffin-embedded human Colon cancer. 1, Antibody was diluted at 1:200(4° overnight). 2, Tris-EDTA,pH9.0 was used for antigen retrieval. 3,Secondary antibody was diluted at 1:200(room temperature, 45min).

Contact information

Orders: order@immunoway.com
Support: tech@immunoway.com
Telephone: 877-594-3616 (Toll Free), 408-747-0185
Website: <http://www.immunoway.com>
Address: 2200 Ringwood Ave San Jose, CA 95131 USA



Please scan the QR code to access additional product information:
RCBT2 Rabbit pAb

