

SG1D4 Rabbit pAb

CatalogNo: YT6714

| Key Features

Host Species

- Rabbit

Reactivity

- Human

Applications

- IHC,IF

MW

- 9kD (Calculated)

Isotype

- IgG

| Recommended Dilution Ratios

IHC 1:50-200

IF 1:50-200

| Storage

Storage* -15°C to -25°C/1 year(Do not lower than -25°C)

Formulation Liquid in PBS containing 50% glycerol, 0.5% BSA and 0.02% sodium azide.

| Basic Information

Clonality Polyclonal

| Immunogen Information

Immunogen Synthesized peptide derived from human SG1D4 AA range: 28-78

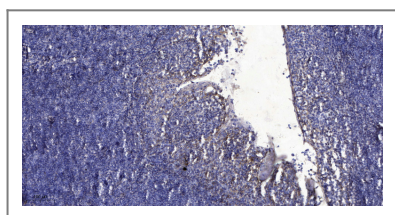
Specificity This antibody detects endogenous levels of SG1D4 at Human

| Target Information

Gene name SCGB1D4 UNQ517/PRO812

Protein Name	SG1D4		
	Organism	Gene ID	UniProt ID
	Human	404552;	Q6XE38;
Cellular Localization	Secreted.		
Tissue specificity	Expressed in all tissues; the highest level of expression is detectable in lymph nodes, tonsil, cultured lymphoblasts and ovary.		
Function	Function:Seems to be involved in the regulation of chemotactic cell migration and invasion.,induction:By interferon gamma.,similarity:Belongs to the secretoglobin family. Lipophilin subfamily.,tissue specificity:Expressed in all tissues; the highest level of expression is detectable in lymph nodes, tonsil, cultured lymphoblasts and ovary.,		

Validation Data



Immunohistochemical analysis of paraffin-embedded human tonsil. 1, Antibody was diluted at 1:200(4° overnight). 2, Tris-EDTA,pH9.0 was used for antigen retrieval. 3,Secondary antibody was diluted at 1:200(room temperature, 30min).

Contact information

Orders: order@immunoway.com
 Support: tech@immunoway.com
 Telephone: 877-594-3616 (Toll Free), 408-747-0185
 Website: <http://www.immunoway.com>
 Address: 2200 Ringwood Ave San Jose, CA 95131 USA



Please scan the QR code to access additional product information:
SG1D4 Rabbit pAb

For Research Use Only. Not for Use in Diagnostic Procedures.

[Antibody](#) | [ELISA Kits](#) | [Protein](#) | [Reagents](#)