

A30BL Rabbit pAb

CatalogNo: YT6708

Key Features

Host Species

- Rabbit

Reactivity

- Human

Applications

- WB

MW

- 28kD (Calculated)

Isotype

- IgG

Recommended Dilution Ratios

WB 1:500-2000

Storage

Storage* -15°C to -25°C/1 year(Do not lower than -25°C)

Formulation Liquid in PBS containing 50% glycerol, 0.5% BSA and 0.02% sodium azide.

Basic Information

Clonality Polyclonal

Immunogen Information

Immunogen Synthesized peptide derived from human A30BL AA range: 53-103

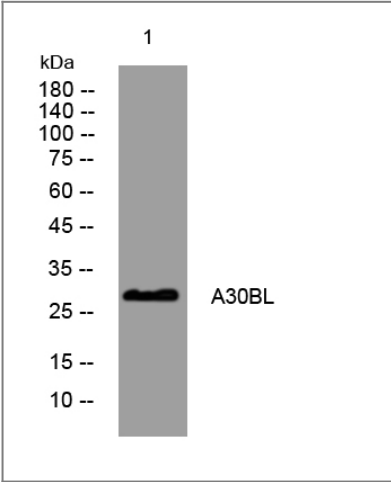
Specificity This antibody detects endogenous levels of A30BL at Human

Target Information

Gene name ANKRD30BL NCRNA00164

Protein Name	A30BL		
	Organism	Gene ID	UniProt ID
	Human		A7E2S9 ;

Validation Data



Western blot analysis of lysates from A549 cells, primary antibody was diluted at 1:1000, 4°over night

Contact information

Orders: order@immunoway.com
Support: tech@immunoway.com
Telephone: 877-594-3616 (Toll Free), 408-747-0185
Website: http://www.immunoway.com
Address: 2200 Ringwood Ave San Jose, CA 95131 USA



Please scan the QR code to access additional product information:
A30BL Rabbit pAb