

## ARID2 Rabbit pAb

CatalogNo: YT6705

### | Key Features

#### Host Species

- Rabbit

#### Reactivity

- Human, Mouse

#### Applications

- WB

#### MW

- 202kD (Calculated)

#### Isotype

- IgG

### | Recommended Dilution Ratios

WB 1:500-2000

### | Storage

#### Storage\*

-15°C to -25°C/1 year (Do not lower than -25°C)

#### Formulation

Liquid in PBS containing 50% glycerol, 0.5% BSA and 0.02% sodium azide.

### | Basic Information

#### Clonality

Polyclonal

### | Immunogen Information

#### Immunogen

Synthesized peptide derived from human ARID2 AA range: 309-359

#### Specificity

This antibody detects endogenous levels of ARID2 at Human

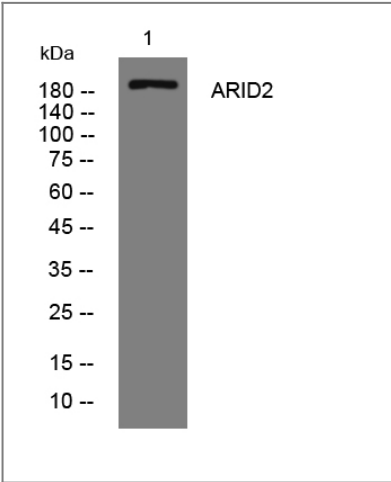
### | Target Information

#### Gene name

ARID2 KIAA1557

Protein Name	ARID2		
	Organism	Gene ID	UniProt ID
	Human	<a href="#">196528;</a>	<a href="#">Q68CP9;</a>
Cellular Localization	Nucleus.		
Tissue specificity	Highly expressed in heart.		
Function	<p>developmental stage:Up-regulated in adult heart (at protein level).,Function:Involved in transcriptional activation and repression of select genes by chromatin remodeling (alteration of DNA-nucleosome topology). Required for the stability of the SWI/SNF chromatin remodeling complex SWI/SNF-B (PBAF). May be involved in targeting the complex to different genes. May be involved in regulating transcriptional activation of cardiac genes.,sequence Caution:Differs from position 1094 onward for unknown reason.,similarity:Contains 1 ARID domain.,similarity:Contains 1 C2H2-type zinc finger.,subunit:Component of the SWI/SNF-B (PBAF) chromatin remodeling complex, at least composed of SMARCA4/BRG1, SMARCB1/BAF47, ACTL6A/BAF53A or ACTL6B/BAF53B, SMARCE1/BAF57, SMARCD1/BAF60A, SMARCD2/BAF60B, perhaps SMARCD3/BAF60C, SMARCC1/BAF155, SMARCC2/BAF170, PB1/BAF180, ARID2/BAF200, ARID1A/BAF250A or ARID1B/BAF250B and actin. Interacts with SRF. Forms complexes with SRF and SRF cofactors MYOCD, NKX2-5 and SRFBP1.,tissue specificity:Highly expressed in heart and testis.,</p>		

| Validation Data



Western blot analysis of lysates from Hela cells, primary antibody was diluted at 1:1000, 4°over night

| Contact information

Orders: order@immunoway.com  
Support: tech@immunoway.com  
Telephone: 877-594-3616 (Toll Free), 408-747-0185  
Website: http://www.immunoway.com  
Address: 2200 Ringwood Ave San Jose, CA 95131 USA



Please scan the QR code  
to access additional  
product information:  
**ARID2 Rabbit pAb**

---

For Research Use Only. Not for Use in Diagnostic Procedures.

[Antibody](#) | [ELISA Kits](#) | [Protein](#) | [Reagents](#)