

## TM242 Rabbit pAb

CatalogNo: YT6693

### Key Features

#### Host Species

- Rabbit

#### Reactivity

- Human, Mouse

#### Applications

- WB

#### MW

- 16kD (Calculated)

#### Isotype

- IgG

### Storage

**Storage\*** -15°C to -25°C/1 year (Do not lower than -25°C)

**Formulation** Liquid in PBS containing 50% glycerol, 0.5% BSA and 0.02% sodium azide.

### Recommended Dilution Ratios

WB 1:500-2000

### Basic Information

**Clonality** Polyclonal

### Immunogen Information

**Immunogen** Synthesized peptide derived from human TM242 AA range: 53-103

**Specificity** This antibody detects endogenous levels of TM242 at Human/Mouse

### Target Information

**Gene name** TMEM242 C6orf35 BM-033 HSPC287

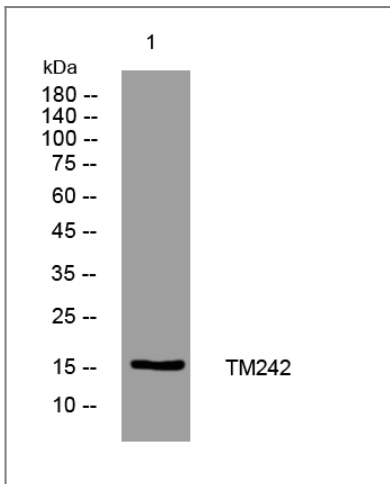
**Protein Name** TM242

Organism	Gene ID	UniProt ID
Human	<a href="#">729515</a> ;	<a href="#">Q9NWH2</a> ;
Mouse	<a href="#">70544</a> ;	<a href="#">Q8VCR3</a> ;

**Cellular Localization** Mitochondrion inner membrane ; Multi-pass membrane protein .

**Function** similarity:Belongs to the UPF0463 family.,similarity:Contains 28 TPR repeats.,

## Validation Data



Western blot analysis of lysates from HpeG2 cells, primary antibody was diluted at 1:1000, 4°C over night

## Contact information

Orders: [order@immunoway.com](mailto:order@immunoway.com)  
Support: [tech@immunoway.com](mailto:tech@immunoway.com)  
Telephone: 877-594-3616 (Toll Free), 408-747-0185  
Website: <http://www.immunoway.com>  
Address: 2200 Ringwood Ave San Jose, CA 95131 USA



Please scan the QR code to access additional product information:  
**TM242 Rabbit pAb**

For Research Use Only. Not for Use in Diagnostic Procedures.

[Antibody](#) | [ELISA Kits](#) | [Protein](#) | [Reagents](#)