

SCMC1 Rabbit pAb

CatalogNo: YT6684

Key Features

Host Species

- Rabbit

Reactivity

- Human, Mouse

Applications

- WB, ELISA, IHC

MW

- 52kD (Calculated)

Isotype

- IgG

Recommended Dilution Ratios

WB 1:500-2000

IHC 1:50-300

ELISA 1:2000-20000

Storage

Storage*

-15°C to -25°C/1 year (Do not lower than -25°C)

Formulation

Liquid in PBS containing 50% glycerol, 0.5% BSA and 0.02% sodium azide.

Basic Information

Clonality

Polyclonal

Immunogen Information

Immunogen

Synthesized peptide derived from human SCMC1 AA range: 162-212

Specificity

This antibody detects endogenous levels of SCMC1 at Human/Mouse

Target Information

Gene name

SLC25A24 APC1 MCSC1 SCAMC1

Protein Name SCMC1

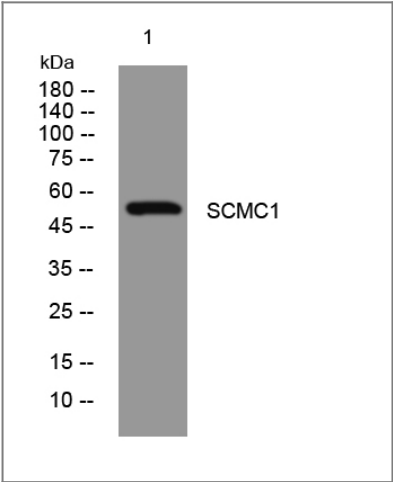
Organism	Gene ID	UniProt ID
Human	29957 ;	Q6NUK1 ;
Mouse	229731 ;	Q8BMD8 ;

Cellular Localization Mitochondrion inner membrane ; Multi-pass membrane protein .

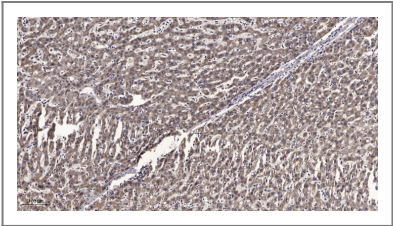
Tissue specificity Present in various cell lines (at protein level). Expressed in all tissues tested. Highly expressed in testis, expressed at intermediate level in small intestine and pancreas, and weakly expressed in kidney, spleen, liver, skeletal muscle and heart.

Function Function:Calcium-dependent mitochondrial solute carrier. Mitochondrial solute carriers shuttle metabolites, nucleotides, and cofactors through the mitochondrial inner membrane. May act as a ATP-Mg/Pi exchanger that mediates the transport of Mg-ATP in exchange for phosphate, catalyzing the net uptake or efflux of adenine nucleotides into or from the mitochondria.,similarity:Belongs to the mitochondrial carrier family.,similarity:Contains 3 Solcar repeats.,similarity:Contains 4 EF-hand domains.,tissue specificity:Present in various cell lines (at protein level). Expressed in all tissues tested. Highly expressed in testis, expressed at intermediate level in small intestine and pancreas, and weakly expressed in kidney, spleen, liver, skeletal muscle and heart.,

Validation Data



Western blot analysis of lysates from Jurkat cells, primary antibody was diluted at 1:1000, 4°over night



Immunohistochemical analysis of paraffin-embedded human liver cancer. 1, Antibody was diluted at 1:200(4° overnight). 2, Tris-EDTA,pH9.0 was used for antigen retrieval. 3,Secondary antibody was diluted at 1:200(room temperature, 45min).

Contact information

Orders: order@immunoway.com
Support: tech@immunoway.com
Telephone: 877-594-3616 (Toll Free), 408-747-0185
Website: http://www.immunoway.com
Address: 2200 Ringwood Ave San Jose, CA 95131 USA



Please scan the QR code
to access additional
product information:
SCMC1 Rabbit pAb

For Research Use Only. Not for Use in Diagnostic Procedures.

[Antibody](#) | [ELISA Kits](#) | [Protein](#) | [Reagents](#)