

OTOG Rabbit pAb

CatalogNo: YT6681

Key Features

Host Species

- Rabbit

Reactivity

- Human, Mouse

Applications

- IHC, IF

MW

- 322kD (Calculated)

Isotype

- IgG

Recommended Dilution Ratios

IHC 1:50-200

IF 1:50-200

Storage

Storage* -15°C to -25°C/1 year (Do not lower than -25°C)

Formulation Liquid in PBS containing 50% glycerol, 0.5% BSA and 0.02% sodium azide.

Basic Information

Clonality Polyclonal

Immunogen Information

Immunogen Synthesized peptide derived from human OTOG AA range: 2706-2756

Specificity This antibody detects endogenous levels of OTOG at Human/Mouse

Target Information

Gene name OTOG OTGN

Protein Name

OTOG

Organism**Gene ID****UniProt ID**

Human

[340990;](#)[Q6ZRI0;](#)

Mouse

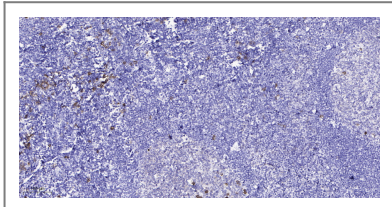
[O55225;](#)**Cellular
Localization**

Apical cell membrane ; Peripheral membrane protein ; Extracellular side . Secreted, extracellular space . Found in fiber-like structures during the maturation process of the tectorial membrane. .

Function

Function:Glycoprotein specific to acellular membranes of the inner ear. May be required for the anchoring of the otoconial membranes and cupulae to the underlying neuroepithelia in the vestibule. May be involved in the organization and/or stabilization of the fibrillar network that compose the tectorial membrane in the cochlea. May play a role in mechanotransduction processes.,PTM:N-glycosylated (By similarity). Not O-glycosylated.,similarity:Belongs to the otogelin family.,similarity:Contains 1 CTCK (C-terminal cystine knot-like) domain.,similarity:Contains 1 EGF-like domain.,similarity:Contains 1 TIL (trypsin inhibitory-like) domain.,similarity:Contains 4 VWFD domains.,subcellular location:Found in fiber-like structures during the maturation process of the tectorial membrane.,

Validation Data



Immunohistochemical analysis of paraffin-embedded human tonsil. 1, Antibody was diluted at 1:200(4° overnight). 2, Tris-EDTA,pH9.0 was used for antigen retrieval. 3,Secondary antibody was diluted at 1:200(room temperature, 45min).

Contact information

Orders: order@immunoway.com
Support: tech@immunoway.com
Telephone: 877-594-3616 (Toll Free), 408-747-0185
Website: <http://www.immunoway.com>
Address: 2200 Ringwood Ave San Jose, CA 95131 USA



Please scan the QR code to access additional product information:
OTOG Rabbit pAb