

NDK7 Rabbit pAb

CatalogNo: YT6676

| Key Features

Host Species

- Rabbit

Reactivity

- Human, Mouse, Rat

Applications

- WB

MW

- 41kD (Calculated)

Isotype

- IgG

| Recommended Dilution Ratios

WB 1:500-2000

| Storage

Storage*

-15°C to -25°C/1 year (Do not lower than -25°C)

Formulation

Liquid in PBS containing 50% glycerol, 0.5% BSA and 0.02% sodium azide.

| Basic Information

Clonality

Polyclonal

| Immunogen Information

Immunogen

Synthesized peptide derived from human NDK7 AA range: 152-202

Specificity

This antibody detects endogenous levels of NDK7 at Human/Mouse/Rat

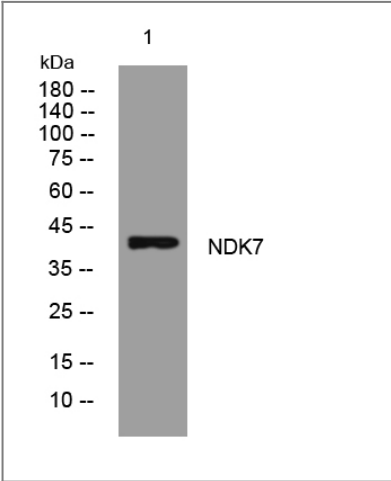
| Target Information

Gene name

NME7

Protein Name	NDK7		
	Organism	Gene ID	UniProt ID
	Human	29922 ;	Q9Y5B8 ;
	Mouse		Q9QXL8 ;
	Rat	171566 ;	Q9QXL7 ;
Cellular Localization	centrosome,		
Function	Catalytic activity:ATP + nucleoside diphosphate = ADP + nucleoside triphosphate.,cofactor:Magnesium.,Function:Major role in the synthesis of nucleoside triphosphates other than ATP. The ATP gamma phosphate is transferred to the NDP beta phosphate via a ping-pong mechanism, using a phosphorylated active-site intermediate.,similarity:Belongs to the NDK family.,similarity:Contains 1 DM10 domain.,		

| Validation Data



Western blot analysis of lysates from HpeG2 cells, primary antibody was diluted at 1:1000, 4°over night

| Contact information

Orders: order@immunoway.com
Support: tech@immunoway.com
Telephone: 877-594-3616 (Toll Free), 408-747-0185
Website: http://www.immunoway.com
Address: 2200 Ringwood Ave San Jose, CA 95131 USA



Please scan the QR code to access additional product information:
NDK7 Rabbit pAb