

CACB1 Rabbit pAb

CatalogNo: YT6675

| Key Features

Host Species

- Rabbit

Reactivity

- Human, Mouse, Rat

Applications

- WB

MW

- 66kD (Calculated)

Isotype

- IgG

| Recommended Dilution Ratios

WB 1:500-2000

| Storage

Storage*

-15°C to -25°C/1 year (Do not lower than -25°C)

Formulation

Liquid in PBS containing 50% glycerol, 0.5% BSA and 0.02% sodium azide.

| Basic Information

Clonality

Polyclonal

| Immunogen Information

Immunogen

Synthesized peptide derived from human CACB1 AA range: 79-129

Specificity

This antibody detects endogenous levels of CACB1 at Human/Mouse/Rat

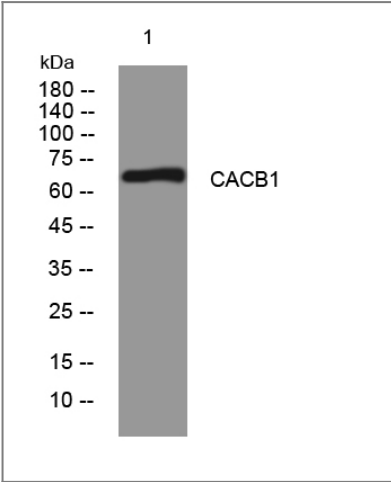
| Target Information

Gene name

CACNB1 CACNLB1

Protein Name	CACB1		
	Organism	Gene ID	UniProt ID
	Human	782;	Q02641;
	Mouse	12295;	Q8R3Z5;
	Rat	50688;	P54283;
Cellular Localization	Cell membrane, sarcolemma ; Peripheral membrane protein ; Cytoplasmic side . Cell membrane ; Peripheral membrane protein .		
Tissue specificity	Detected in heart ventricle (at protein level) (PubMed:15615847). Isoform 1 and isoform 3 are expressed in brain, heart, spleen, central nervous system and neuroblastoma cells. Isoform 2 is expressed in skeletal muscle.		
Function	Function:The beta subunit of voltage-dependent calcium channels contributes to the function of the calcium channel by increasing peak calcium current, shifting the voltage dependencies of activation and inactivation, modulating G protein inhibition and controlling the alpha-1 subunit membrane targeting.,similarity:Belongs to the calcium channel beta subunit family.,similarity:Contains 1 SH3 domain.,subunit:The L-type calcium channel is composed of four subunits: alpha-1, alpha-2, beta and gamma. Interacts with JSRP1.,tissue specificity:Expressed in brain, heart and spleen (isoform 1 and 3) and in skeletal muscle (isoform 2).,		

| Validation Data



Western blot analysis of lysates from U2OS cells, primary antibody was diluted at 1:1000, 4°over night

| Contact information

Orders: order@immunoway.com
Support: tech@immunoway.com
Telephone: 877-594-3616 (Toll Free), 408-747-0185
Website: http://www.immunoway.com
Address: 2200 Ringwood Ave San Jose, CA 95131 USA



Please scan the QR code
to access additional
product information:
CACB1 Rabbit pAb

For Research Use Only. Not for Use in Diagnostic Procedures.

[Antibody](#) | [ELISA Kits](#) | [Protein](#) | [Reagents](#)