

M4A6A Rabbit pAb

CatalogNo: YT6673

| Key Features

Host Species

- Rabbit

Reactivity

- Human

Applications

- WB

MW

- 27kD (Calculated)

Isotype

- IgG

| Recommended Dilution Ratios

WB 1:500-2000

| Storage

Storage* -15°C to -25°C/1 year(Do not lower than -25°C)

Formulation Liquid in PBS containing 50% glycerol, 0.5% BSA and 0.02% sodium azide.

| Basic Information

Clonality Polyclonal

| Immunogen Information

Immunogen Synthesized peptide derived from human M4A6A AA range: 8-58

Specificity This antibody detects endogenous levels of M4A6A at Human

| Target Information

Gene name MS4A6A 4SPAN3 CD20L3 MS4A6 CDA01 MSTP090

Protein Name M4A6A

Organism

Gene ID

UniProt ID

Human

[64231](#);

[Q9H2W1](#);

**Cellular
Localization**

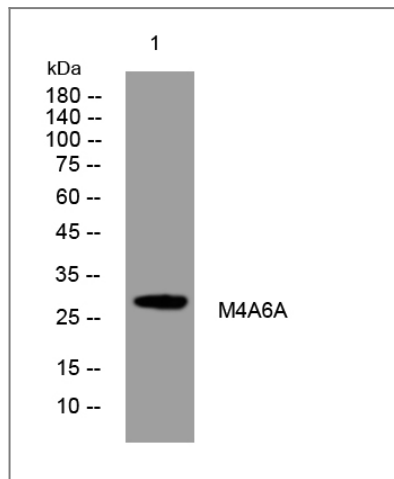
Membrane; Multi-pass membrane protein.

Tissue specificity Variable expression in some B-cell, myelomonocytic, and erythroleukemia cell lines.

Function

Function:May be involved in signal transduction as a component of a multimeric receptor complex.,similarity:Belongs to the MS4A family.,tissue specificity:Variable expression in some B-cell, myelomonocytic, and erythroleukemia cell lines.,

Validation Data



Western blot analysis of lysates from HEK293 cells, primary antibody was diluted at 1:1000, 4°over night

Contact information

Orders: order@immunoway.com
Support: tech@immunoway.com
Telephone: 877-594-3616 (Toll Free), 408-747-0185
Website: <http://www.immunoway.com>
Address: 2200 Ringwood Ave San Jose, CA 95131 USA



Please scan the QR code to access additional product information:
M4A6A Rabbit pAb

For Research Use Only. Not for Use in Diagnostic Procedures.

[Antibody](#) | [ELISA Kits](#) | [Protein](#) | [Reagents](#)