

SRGN Rabbit pAb

CatalogNo: YT6664

| Key Features

Host Species

- Rabbit

Reactivity

- Human, Mouse, Rat

Applications

- WB

MW

- 17kD (Calculated)

Isotype

- IgG

| Recommended Dilution Ratios

WB 1:500-2000

| Storage

Storage* -15°C to -25°C/1 year (Do not lower than -25°C)

Formulation Liquid in PBS containing 50% glycerol, 0.5% BSA and 0.02% sodium azide.

| Basic Information

Clonality Polyclonal

| Immunogen Information

Immunogen Synthesized peptide derived from human SRGN AA range: 30-80

Specificity This antibody detects endogenous levels of SRGN at Human/Mouse/Rat

| Target Information

Gene name SRGN PRG PRG1

Protein Name	SRGN		
	Organism	Gene ID	UniProt ID
	Human	5552 ;	P10124 ;
	Mouse	19073 ;	P13609 ;
	Rat	56782 ;	P04917 ;

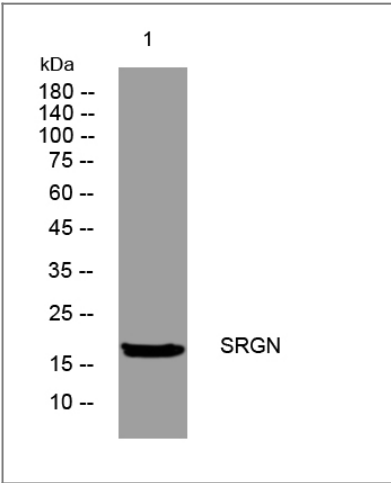
Cellular Localization

Cytoplasmic granule . Cytolytic granule . Secreted, extracellular space . Golgi apparatus . Found in mast cell granules and in cytoplasmic granules of cytolytic T lymphocytes from where it is secreted upon cell activation (By similarity). Secreted constitutively by endothelial cells and macrophages (PubMed:11154222). Located to Golgi apparatus during neutrophil differentiation (PubMed:15136585). .

Function

Function:Plays a role in formation of mast cell secretory granules and mediates storage of various compounds in secretory vesicles. Required for storage of some proteases in both connective tissue and mucosal mast cells and for storage of granzyme B in T lymphocytes. Plays a role in localizing neutrophil elastase in azurophil granules of neutrophils. Mediates processing of MMP2. Plays a role in cytotoxic cell granule-mediated apoptosis by forming a complex with granzyme B which is delivered to cells by perforin to induce apoptosis. Regulates the secretion of TNF-alpha and may also regulate protease secretion. Inhibits bone mineralization.,induction:By EBV.,PTM:O-glycosylated; contains chondroitin sulfate and heparan sulfate.,similarity:Belongs to the serglycin family.,subcellular location:Found in mast cell granules and in cytoplasmic granules of cytolytic T lymphocytes from where it is secreted upon cell activation. Secreted constitutively by endothelial cells and macrophages. Located to Golgi apparatus during neutrophil differentiation.,subunit:Binds to activated CD44 and to GZMB.,

Validation Data



Western blot analysis of lysates from VEC cells, primary antibody was diluted at 1:1000, 4°over night

Contact information

Orders: order@immunoway.com
Support: tech@immunoway.com
Telephone: 877-594-3616 (Toll Free), 408-747-0185
Website: <http://www.immunoway.com>
Address: 2200 Ringwood Ave San Jose, CA 95131 USA



Please scan the QR code
to access additional
product information:
SRGN Rabbit pAb

For Research Use Only. Not for Use in Diagnostic Procedures.

[Antibody](#) | [ELISA Kits](#) | [Protein](#) | [Reagents](#)