

SY14L Rabbit pAb

CatalogNo: YT6662

Key Features

Host Species

- Rabbit

Reactivity

- Human

Applications

- WB,ELISA,IHC

MW

- 21kD (Calculated)

Isotype

- IgG

Recommended Dilution Ratios

WB 1:500-2000

IHC 1:50-300

ELISA 1:2000-20000

Storage

Storage* -15°C to -25°C/1 year(Do not lower than -25°C)

Formulation Liquid in PBS containing 50% glycerol, 0.5% BSA and 0.02% sodium azide.

Basic Information

Clonality Polyclonal

Immunogen Information

Immunogen Synthesized peptide derived from human SY14L AA range: 85-135

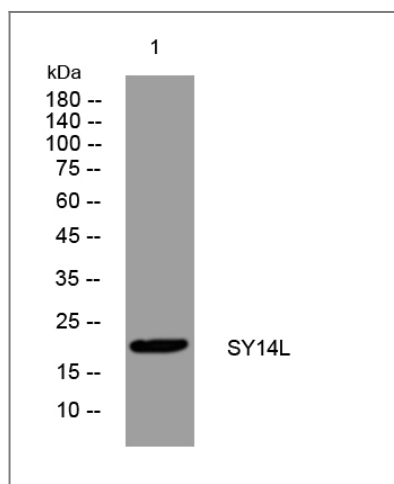
Specificity This antibody detects endogenous levels of SY14L at Human

Target Information

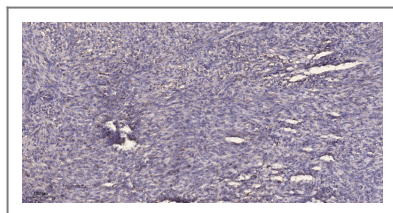
Gene name SYT14L SYTDEP

Protein Name	SY14L		
	Organism	Gene ID	UniProt ID
	Human		Q58G82 ;
Cellular Localization	plasma membrane,		
Tissue specificity	Expressed in mature peripheral blood neutrophils (at protein level) (PubMed:16376304). Expressed in heart, pancreas, liver and skeletal muscle (PubMed:11543631). Expressed in umbilical vein endothelial cells and melanocytes (PubMed:23999003).		

Validation Data



Western blot analysis of lysates from MCF-7 cells, primary antibody was diluted at 1:1000, 4° over night



Immunohistochemical analysis of paraffin-embedded human Colon cancer. 1, Antibody was diluted at 1:200(4° overnight). 2, Tris-EDTA,pH9.0 was used for antigen retrieval. 3,Secondary antibody was diluted at 1:200(room temperature, 45min).

Contact information

Orders: order@immunoway.com
 Support: tech@immunoway.com
 Telephone: 877-594-3616 (Toll Free), 408-747-0185
 Website: <http://www.immunoway.com>
 Address: 2200 Ringwood Ave San Jose, CA 95131 USA



Please scan the QR code to access additional product information:
SY14L Rabbit pAb

