

## ZN561 Rabbit pAb

CatalogNo: YT6652

### | Key Features

#### Host Species

- Rabbit

#### Reactivity

- Human

#### Applications

- WB

#### MW

- 53kD (Calculated)

#### Isotype

- IgG

### | Recommended Dilution Ratios

WB 1:500-2000

### | Storage

**Storage\*** -15°C to -25°C/1 year(Do not lower than -25°C)

**Formulation** Liquid in PBS containing 50% glycerol, 0.5% BSA and 0.02% sodium azide.

### | Basic Information

**Clonality** Polyclonal

### | Immunogen Information

**Immunogen** Synthesized peptide derived from human ZN561 AA range: 387-437

**Specificity** This antibody detects endogenous levels of ZN561 at Human

### | Target Information

**Gene name** ZNF561

**Protein Name** ZN561

**Organism**

Human

**Gene ID**

[93134](#);

**UniProt ID**

[Q8N587](#);

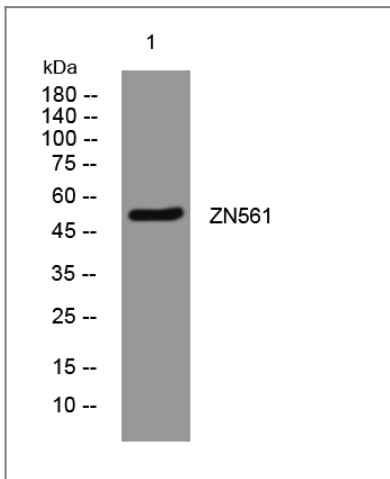
**Cellular Localization**

Nucleus .

**Function**

Caution: Could be the product of a pseudogene., Function: May be involved in transcriptional regulation., sequence Caution: Contaminating sequence. Potential poly-A sequence., similarity: Belongs to the krueppel C2H2-type zinc-finger protein family., similarity: Contains 1 KRAB domain., similarity: Contains 10 C2H2-type zinc fingers., similarity: Contains 12 C2H2-type zinc fingers.,

## Validation Data



Western blot analysis of lysates from 3T3 cells, primary antibody was diluted at 1:1000, 4° over night

## Contact information

Orders: [order@immunoway.com](mailto:order@immunoway.com)  
Support: [tech@immunoway.com](mailto:tech@immunoway.com)  
Telephone: 877-594-3616 (Toll Free), 408-747-0185  
Website: <http://www.immunoway.com>  
Address: 2200 Ringwood Ave San Jose, CA 95131 USA



Please scan the QR code to access additional product information:  
**ZN561 Rabbit pAb**