

ZN165 Rabbit pAb

CatalogNo: YT6647

Key Features

Host Species

- Rabbit

Reactivity

- Human

Applications

- WB

MW

- 53kD (Calculated)

Isotype

- IgG

Recommended Dilution Ratios

WB 1:500-2000

Storage

Storage* -15°C to -25°C/1 year(Do not lower than -25°C)

Formulation Liquid in PBS containing 50% glycerol, 0.5% BSA and 0.02% sodium azide.

Basic Information

Clonality Polyclonal

Immunogen Information

Immunogen Synthesized peptide derived from human ZN165 AA range: 200-250

Specificity This antibody detects endogenous levels of ZN165 at Human

Target Information

Gene name ZNF165 ZPF165 ZSCAN7

Protein Name ZN165

Organism

Human

Gene ID

[7718;](#)

UniProt ID

[P49910;](#)

**Cellular
Localization**

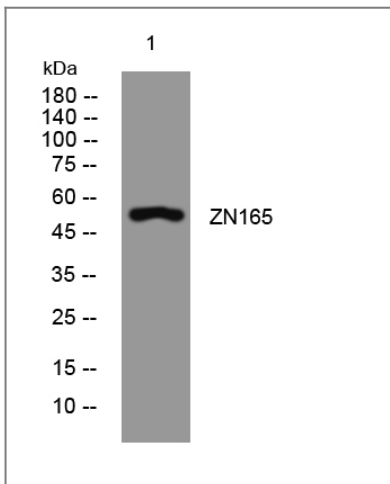
Nucleus .

Tissue specificity Expressed specifically in testis.

Function

Function:May be involved in transcriptional regulation.,similarity:Belongs to the krueppel C2H2-type zinc-finger protein family.,similarity:Contains 1 SCAN box domain.,similarity:Contains 6 C2H2-type zinc fingers.,tissue specificity:Expressed specifically in testis.,

Validation Data



Western blot analysis of lysates from SW480 cells, primary antibody was diluted at 1:1000, 4°over night

Contact information

Orders: order@immunoway.com
Support: tech@immunoway.com
Telephone: 877-594-3616 (Toll Free), 408-747-0185
Website: <http://www.immunoway.com>
Address: 2200 Ringwood Ave San Jose, CA 95131 USA



Please scan the QR code
to access additional
product information:

ZN165 Rabbit pAb