

## LIPA2 Rabbit pAb

CatalogNo: YT6638

### Key Features

#### Host Species

- Rabbit

#### Reactivity

- Human, Mouse

#### Applications

- WB, ELISA, IHC

#### MW

- 138kD (Calculated)

#### Isotype

- IgG

### Recommended Dilution Ratios

WB 1:500-2000

IHC 1:50-300

ELISA 1:2000-20000

### Storage

**Storage\*** -15°C to -25°C/1 year (Do not lower than -25°C)

**Formulation** Liquid in PBS containing 50% glycerol, 0.5% BSA and 0.02% sodium azide.

### Basic Information

**Clonality** Polyclonal

### Immunogen Information

**Immunogen** Synthesized peptide derived from human LIPA2 AA range: 49-99

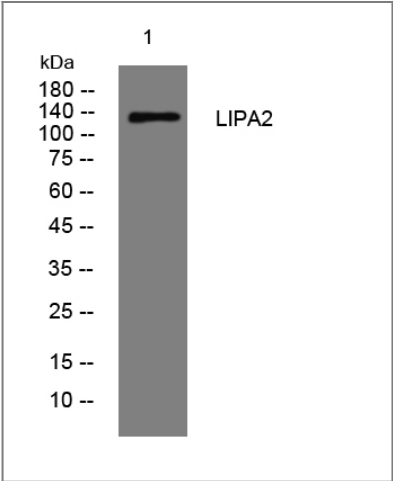
**Specificity** This antibody detects endogenous levels of LIPA2 at Human/Mouse

### Target Information

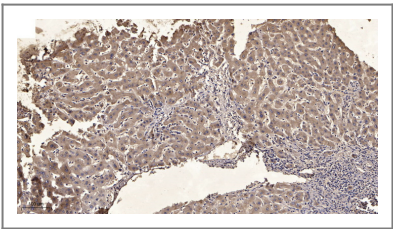
**Gene name** PPFIA2

|                       |   |                         |                         |
|-----------------------|---|-------------------------|-------------------------|
| Protein Name          | LIPA2   |                         |                         |
|                       | Organism  | Gene ID                 | UniProt ID              |
|                       | Human   | <a href="#">8499;</a>   | <a href="#">O75334;</a> |
|                       | Mouse   | <a href="#">327814;</a> | <a href="#">Q8BSS9;</a> |
| Cellular Localization | Cytoplasm . Cell surface . Cell projection, dendritic spine . Colocalizes with PTPRF at the cell surface.   |                         |                         |
| Tissue specificity    | Expressed only in brain.  |                         |                         |
| Function              | <p>Domain:The N-terminal coiled coil regions mediate homodimerization preferentially and heterodimerization type alpha/alpha. The C-terminal, non-coiled coil regions mediate heterodimerization type alpha/beta and interaction with PTPRD, PTPRF and PTPRS.,Function:Alters PTPRF cellular localization and induces PTPRF clustering. May regulate the disassembly of focal adhesions. May localize receptor-like tyrosine phosphatases type 2A at specific sites on the plasma membrane, possibly regulating their interaction with the extracellular environment and their association with substrates.,similarity:Belongs to the liprin family. Liprin-alpha subfamily.,similarity:Contains 3 SAM (sterile alpha motif) domains.,subcellular location:Colocalizes with PTPRF at the cell surface.,subunit:Forms homodimers and heterodimers with liprins-alpha and liprins-beta. Interacts with the second PTPase domain of PTPRD, PTPRF and PTPRS.,tissue specificity:Expressed only in brain.,</p> |                         |                         |

Validation Data



Western blot analysis of lysates from MDA-MB cells, primary antibody was diluted at 1:1000, 4°over night



Immunohistochemical analysis of paraffin-embedded human liver cancer. 1, Antibody was diluted at 1:200(4° overnight). 2, Tris-EDTA,pH9.0 was used for antigen retrieval. 3,Secondary antibody was diluted at 1:200(room temperature, 45min).

## | Contact information

Orders: order@immunoway.com  
Support: tech@immunoway.com  
Telephone: 877-594-3616 (Toll Free), 408-747-0185  
Website: <http://www.immunoway.com>  
Address: 2200 Ringwood Ave San Jose, CA 95131 USA



Please scan the QR code  
to access additional  
product information:  
**LIPA2 Rabbit pAb**

---

For Research Use Only. Not for Use in Diagnostic Procedures.

[Antibody](#) | [ELISA Kits](#) | [Protein](#) | [Reagents](#)