

ABCAB Rabbit pAb

CatalogNo: YT6619

| Key Features

Host Species

- Rabbit

Reactivity

- Human,Rat,Mouse,

Applications

- WB

MW

- 17kD (Calculated)

Isotype

- IgG

| Recommended Dilution Ratios

WB 1:500-2000

| Storage

Storage* -15°C to -25°C/1 year(Do not lower than -25°C)

Formulation Liquid in PBS containing 50% glycerol, 0.5% BSA and 0.02% sodium azide.

| Basic Information

Clonality Polyclonal

| Immunogen Information

Immunogen Synthesized peptide derived from human ABCAB AA range: 45-95

Specificity This antibody detects endogenous levels of ABCAB at Human

| Target Information

Gene name ABCA11P ABCA11

Protein Name ABCAB

Organism

Gene ID

UniProt ID

Human

[Q4W5N1](#);

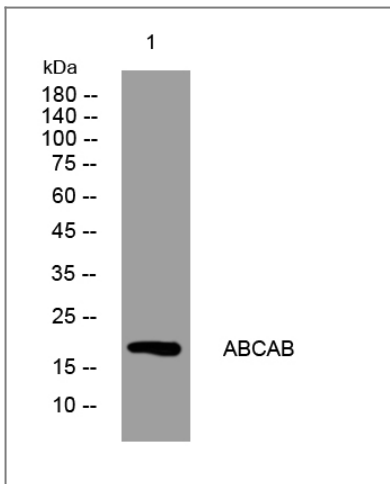
**Cellular
Localization**

integral component of membrane,

Function

Caution: In contrast to other members of the family, it is much shorter and lacks ABC transporter domains. Defined as a pseudogene by HGNC. However, proteomic data on a specific peptide from PubMed:17924679 suggest the existence of this protein., similarity: Belongs to the ABC transporter family. ABCA subfamily.,

| Validation Data



Western blot analysis of lysates from U2OS cells, primary antibody was diluted at 1:1000, 4° over night

| Contact information

Orders: order@immunoway.com
Support: tech@immunoway.com
Telephone: 877-594-3616 (Toll Free), 408-747-0185
Website: <http://www.immunoway.com>
Address: 2200 Ringwood Ave San Jose, CA 95131 USA



Please scan the QR code to access additional product information:
ABCAB Rabbit pAb

For Research Use Only. Not for Use in Diagnostic Procedures.

[Antibody](#) | [ELISA Kits](#) | [Protein](#) | [Reagents](#)