

TRI66 Rabbit pAb

CatalogNo: YT6600

Key Features

Host Species

- Rabbit

Reactivity

- Human, Mouse

Applications

- WB

MW

- 134kD (Calculated)

Isotype

- IgG

Recommended Dilution Ratios

WB 1:500-2000

Storage

Storage*

-15°C to -25°C/1 year (Do not lower than -25°C)

Formulation

Liquid in PBS containing 50% glycerol, 0.5% BSA and 0.02% sodium azide.

Basic Information

Clonality

Polyclonal

Immunogen Information

Immunogen

Synthesized peptide derived from human TRI66 AA range: 608-658

Specificity

This antibody detects endogenous levels of TRI66 at Human/Mouse

Target Information

Gene name

TRIM66 C11orf29 KIAA0298

Protein Name

TRI66

Organism**Gene ID****UniProt ID**

Human

[9866;](#)[O15016;](#)

Mouse

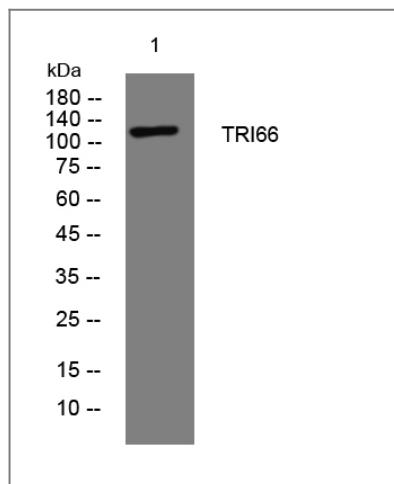
[330627;](#)[Q924W6;](#)**Cellular Localization**

Nucleus. Forms discrete foci within the centromeric chromocenter and surrounding nucleoplasm. .

Function

Function:May function as transcription repressor; The repressive effects are mediated, at least in part, by recruitment of deacetylase activity. May play a role as negative regulator of postmeiotic genes acting through CBX3 complex formation and centromere association.,similarity:Contains 1 bromo domain.,similarity:Contains 1 PHD-type zinc finger.,similarity:Contains 2 B box-type zinc fingers.,subcellular location:Forms discrete foci within the centromeric chromocenter and surrounding nucleoplasm.,subunit:Can form homo- and heterodimers. Interacts with CBX5, CBX1 and CBX3 via PxVxL motif.,

Validation Data



Western blot analysis of lysates from A549 cells, primary antibody was diluted at 1:1000, 4° over night

Contact information

Orders: order@immunoway.com
Support: tech@immunoway.com
Telephone: 877-594-3616 (Toll Free), 408-747-0185
Website: <http://www.immunoway.com>
Address: 2200 Ringwood Ave San Jose, CA 95131 USA



Please scan the QR code to access additional product information:
TRI66 Rabbit pAb