

TINAL Rabbit pAb

CatalogNo: YT6591

| Key Features

Host Species

- Rabbit

Reactivity

- Human, Mouse, Rat

Applications

- WB, IHC

MW

- 51kD (Calculated)

Isotype

- IgG

| Recommended Dilution Ratios

WB 1:500-2000

IHC 1:50-300

| Storage

Storage* -15°C to -25°C/1 year (Do not lower than -25°C)

Formulation Liquid in PBS containing 50% glycerol, 0.5% BSA and 0.02% sodium azide.

| Basic Information

Clonality Polyclonal

| Immunogen Information

Immunogen Synthesized peptide derived from human TINAL AA range: 249-299

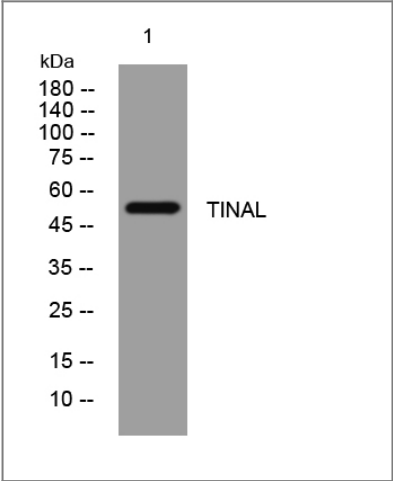
Specificity This antibody detects endogenous levels of TINAL at Human/Mouse/Rat

| Target Information

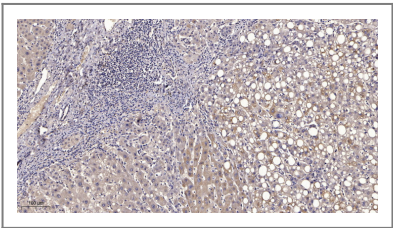
Gene name TINAGL1 GIS5 LCN7 OLRG2 TINAGL PP6614 PSEC0088 UNQ204/PRO230

Protein Name	TINAL		
	Organism	Gene ID	UniProt ID
	Human	64129;	Q9GZM7;
	Mouse	94242;	Q99JR5;
	Rat	94174;	Q9EQT5;
Cellular Localization	Secreted .		
Tissue specificity	Highly expressed in aorta, heart, placenta, kidney and a colorectal adenocarcinoma cell line. Moderately expressed in skeletal muscle, pancreas, lung, lymph nodes, adrenal gland, bone marrow and thyroid. Weakly expressed in colon, small intestine, ovary, spleen, testis and prostate. Predominantly found in vascular smooth muscle cells, but also in cardiac and skeletal muscle cells as well as kidney.		
Function	Function:May be implicated in the adrenocortical zonation and in mechanisms for repressing the CYP11B1 gene expression in adrenocortical cells.,PTM:Glycosylated.,similarity:Belongs to the peptidase C1 family.,similarity:Contains 1 SMB (somatomedin-B) domain.,tissue specificity:Highly expressed in aorta, heart, placenta, kidney and a colorectal adenocarcinoma cell line. Moderately expressed in skeletal muscle, pancreas, lung, lymph nodes, adrenal gland, bone marrow and thyroid. Weakly expressed in colon, small intestine, ovary, spleen, testis and prostate. Predominantly found in vascular smooth muscle cells, but also in cardiac and skeletal muscle cells as well as kidney.,		

Validation Data



Western blot analysis of lysates from A431 cells, primary antibody was diluted at 1:1000, 4°over night



Immunohistochemical analysis of paraffin-embedded human liver cancer. 1, Antibody was diluted at 1:200(4° overnight). 2, Tris-EDTA,pH9.0 was used for antigen retrieval. 3,Secondary antibody was diluted at 1:200(room temperature, 45min).

| Contact information

Orders: order@immunoway.com
Support: tech@immunoway.com
Telephone: 877-594-3616 (Toll Free), 408-747-0185
Website: <http://www.immunoway.com>
Address: 2200 Ringwood Ave San Jose, CA 95131 USA



Please scan the QR code
to access additional
product information:
TINAL Rabbit pAb

For Research Use Only. Not for Use in Diagnostic Procedures.

[Antibody](#) | [ELISA Kits](#) | [Protein](#) | [Reagents](#)