

## MT1F Rabbit pAb

CatalogNo: YT6589

### | Key Features

#### Host Species

- Rabbit

#### Reactivity

- Human

#### Applications

- IHC,IF

#### MW

- 7kD (Calculated)

#### Isotype

- IgG

### | Recommended Dilution Ratios

IHC 1:50-200

IF 1:50-200

### | Storage

**Storage\*** -15°C to -25°C/1 year(Do not lower than -25°C)

**Formulation** Liquid in PBS containing 50% glycerol, 0.5% BSA and 0.02% sodium azide.

### | Basic Information

**Clonality** Polyclonal

### | Immunogen Information

**Immunogen** Synthesized peptide derived from human MT1F AA range: 5-55

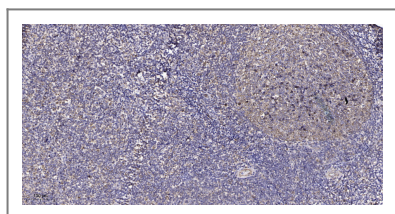
**Specificity** This antibody detects endogenous levels of MT1F at Human

### | Target Information

**Gene name** MT1F PRO0376

<b>Protein Name</b>	MT1F		
	<b>Organism</b>	<b>Gene ID</b>	<b>UniProt ID</b>
	Human	<a href="#">4494;</a>	<a href="#">P04733;</a>
<b>Cellular Localization</b>	nucleus,cytoplasm,perinuclear region of cytoplasm,		
<b>Function</b>	Domain:Class I metallothioneins contain 2 metal-binding domains: four divalent ions are chelated within cluster A of the alpha domain and are coordinated via cysteinyl thiolate bridges to 11 cysteine ligands. Cluster B, the corresponding region within the beta domain, can ligate three divalent ions to 9 cysteines.,Function:Metallothioneins have a high content of cysteine residues that bind various heavy metals; these proteins are transcriptionally regulated by both heavy metals and glucocorticoids.,similarity:Belongs to the metallothionein superfamily. Type 1 family.,subunit:Monomer.,		

## Validation Data



Immunohistochemical analysis of paraffin-embedded human tonsil. 1, Antibody was diluted at 1:200(4° overnight). 2, Tris-EDTA,pH9.0 was used for antigen retrieval. 3,Secondary antibody was diluted at 1:200(room temperature, 45min).

## Contact information

Orders: [order@immunoway.com](mailto:order@immunoway.com)  
 Support: [tech@immunoway.com](mailto:tech@immunoway.com)  
 Telephone: 877-594-3616 (Toll Free), 408-747-0185  
 Website: <http://www.immunoway.com>  
 Address: 2200 Ringwood Ave San Jose, CA 95131 USA



Please scan the QR code to access additional product information:  
**MT1F Rabbit pAb**

For Research Use Only. Not for Use in Diagnostic Procedures.

[Antibody](#) | [ELISA Kits](#) | [Protein](#) | [Reagents](#)