

PYDC1 Rabbit pAb

CatalogNo: YT6579

Key Features

Host Species

- Rabbit

Reactivity

- Human

Applications

- IHC,IF

MW

- 10kD (Calculated)

Isotype

- IgG

Storage

Storage* -15°C to -25°C/1 year(Do not lower than -25°C)**Formulation** Liquid in PBS containing 50% glycerol, 0.5% BSA and 0.02% sodium azide.

Recommended Dilution Ratios

IHC 1:50-200**IF 1:50-200**

Basic Information

Clonality Polyclonal

Immunogen Information

Immunogen Synthesized peptide derived from human PYDC1 AA range: 25-75**Specificity** This antibody detects endogenous levels of PYDC1 at Human

Target Information

Gene name PYDC1 ASC2 ASCI POP1 PYC1

Protein Name PYDC1

Organism

Human

Gene ID

[260434](#);

UniProt ID

[Q8WXC3](#);

Cellular Localization

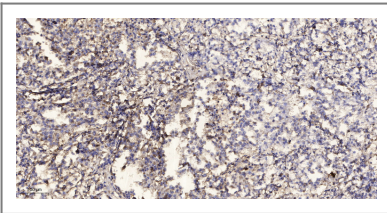
Cytoplasm . Recruited to specks formed by PYCARD within the cytoplasm. .

Tissue specificity Predominantly expressed in monocytes, macrophages and granulocytes.

Function

Function:Associates with apoptosis-associated specklike protein containing a CARD domain (ASC) and modulates its ability to collaborate with pyrin and cryopyrin in NF-kappa-B and pro-caspase-1 activation. Suppresses kinase activity of NF-kappa-B inhibitor kinase (IKK) complex, expression of NF-kappa-B inducible genes and inhibits NF-kappa-B activation by cytokines and LPS.,PTM:Phosphorylated.,similarity:Contains 1 DAPIN domain.,subunit:Interacts with PYCARD/ASC.,tissue specificity:Predominantly expressed in monocytes, macrophages and granulocytes.,

Validation Data



Immunohistochemical analysis of paraffin-embedded human Squamous cell carcinoma of lung. 1, Antibody was diluted at 1:200(4° overnight). 2, Tris-EDTA,pH9.0 was used for antigen retrieval. 3,Secondary antibody was diluted at 1:200(room temperature, 45min).

Contact information

Orders: order@immunoway.com
Support: tech@immunoway.com
Telephone: 877-594-3616 (Toll Free), 408-747-0185
Website: <http://www.immunoway.com>
Address: 2200 Ringwood Ave San Jose, CA 95131 USA



Please scan the QR code to access additional product information:
PYDC1 Rabbit pAb

For Research Use Only. Not for Use in Diagnostic Procedures.

[Antibody](#) | [ELISA Kits](#) | [Protein](#) | [Reagents](#)