

VIP1 Rabbit pAb

CatalogNo: YT6569

Key Features

Host Species

- Rabbit

Reactivity

- Human, Mouse, Rat

Applications

- WB

MW

- 158kD (Calculated)

Isotype

- IgG

Recommended Dilution Ratios

WB 1:500-2000

Storage

Storage* -15°C to -25°C/1 year (Do not lower than -25°C)

Formulation Liquid in PBS containing 50% glycerol, 0.5% BSA and 0.02% sodium azide.

Basic Information

Clonality Polyclonal

Immunogen Information

Immunogen Synthesized peptide derived from human VIP1 AA range: 1350-1400

Specificity This antibody detects endogenous levels of VIP1 at Human/Mouse/Rat

Target Information

Gene name PPIP5K1 HISPPD2A IP6K IPS1 KIAA0377 VIP1

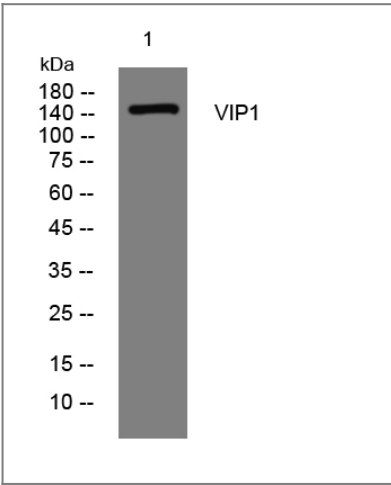
Protein Name	VIP1		
	Organism	Gene ID	UniProt ID
	Human	9677 ;	Q6PFW1 ;
	Mouse	327655 ;	A2ARP1 ;
	Rat		P0C644 ;

Cellular Localization Cytoplasm, cytosol . Cell membrane . Relocalizes to the plasma membrane upon activation of the PtdIns 3-kinase pathway. .

Tissue specificity Widely expressed, with a higher expression in skeletal muscle, heart and brain.

Function Catalytic activity:ATP + 1D-myo-inositol 1,3,4,5,6-pentakisphosphate = ADP + diphospho-1D-myo-inositol tetrakisphosphate (isomeric configuration unknown).,Catalytic activity:ATP + 1D-myo-inositol 5-diphosphate pentakisphosphate = ADP + 1D-myo-inositol bisdiphosphate tetrakisphosphate (isomeric configuration unknown).,Catalytic activity:ATP + 1D-myo-inositol hexakisphosphate = ADP + 5-diphospho-1D-myo-inositol (1,2,3,4,6)pentakisphosphate.,Caution:Although related to histidine acid phosphatases, it lacks the conserved active sites, suggesting that it has no phosphatase activity.,Function:Bifunctional inositol kinase that catalyzes the formation of diphosphoinositol pentakisphosphate (InsP7 or PP-InsP5) and bi-diphosphoinositol tetrakisphosphate (InsP8 or PP2-InsP4). Converts inositolitol hexakisphosphate (InsP6) to InsP7. Also able to convert InsP7 to InsP8. Probably specifically mediates the formation of 4PP-InsP5 and 6PP-InsP5 InsP7 isomers but not of 5PP-IP5 InsP7 isomer. Activated when cells are exposed to hyperosmotic stress.,similarity:Belongs to the histidine acid phosphatase family. VIP1 subfamily.,tissue specificity:Widely expressed, with a higher expression in skeletal muscle, heart and brain.,

Validation Data



Western blot analysis of lysates from HCT116 cells, primary antibody was diluted at 1:1000, 4°over night

Contact information

Orders: order@immunoway.com
Support: tech@immunoway.com
Telephone: 877-594-3616 (Toll Free), 408-747-0185
Website: <http://www.immunoway.com>
Address: 2200 Ringwood Ave San Jose, CA 95131 USA



Please scan the QR code
to access additional
product information:
VIP1 Rabbit pAb

For Research Use Only. Not for Use in Diagnostic Procedures.

[Antibody](#) | [ELISA Kits](#) | [Protein](#) | [Reagents](#)