

## CU024 Rabbit pAb

CatalogNo: YT6568

### Key Features

#### Host Species

- Rabbit

#### Reactivity

- Human

#### Applications

- WB

#### MW

- 15kD (Calculated)

#### Isotype

- IgG

### Recommended Dilution Ratios

WB 1:500-2000

### Storage

#### Storage\*

-15°C to -25°C/1 year(Do not lower than -25°C)

#### Formulation

Liquid in PBS containing 50% glycerol, 0.5% BSA and 0.02% sodium azide.

### Basic Information

#### Clonality

Polyclonal

### Immunogen Information

#### Immunogen

Synthesized peptide derived from human CU024 AA range: 4-54

#### Specificity

This antibody detects endogenous levels of CU024 at Human

### Target Information

#### Gene name

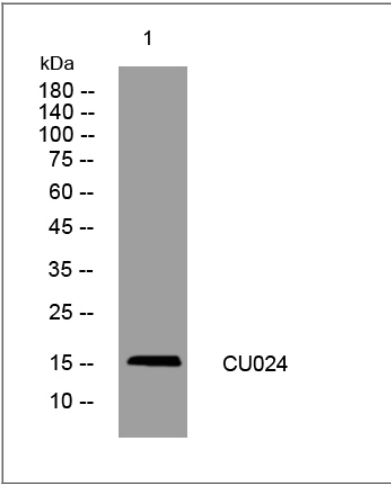
LINC00114 C21orf24 NCRNA00114

Protein Name	CU024		
	Organism	Gene ID	UniProt ID
	Human		<a href="#">Q6XXX2</a> ;

**Tissue specificity** Expressed in a range of cell lines, including B-cell lymphoma and prostate.

**Function** Caution:Product of a dubious CDS prediction. Probable non-coding RNA. At least 6 alternative mRNA transcripts exist, with consensus splice donor and acceptor sites, but no coding potential nor murine ortholog. This protein sequence corresponds to the so-called isoforms C21orf24-6 and C21orf24-7.,tissue specificity:Expressed in a range of cell lines, including B-cell lymphoma and prostate.,

## Validation Data



Western blot analysis of lysates from 293T cells, primary antibody was diluted at 1:1000, 4°over night

## Contact information

Orders: order@immunoway.com  
 Support: tech@immunoway.com  
 Telephone: 877-594-3616 (Toll Free), 408-747-0185  
 Website: <http://www.immunoway.com>  
 Address: 2200 Ringwood Ave San Jose, CA 95131 USA



Please scan the QR code to access additional product information:  
**CU024 Rabbit pAb**