

PEF1 Rabbit pAb

CatalogNo: YT6567

| Key Features

Host Species

- Rabbit

Reactivity

- Human, Mouse, Rat

Applications

- WB, IHC

MW

- 31kD (Calculated)

Isotype

- IgG

| Recommended Dilution Ratios

WB 1:500-2000

IHC 1:50-300

| Storage

Storage* -15°C to -25°C/1 year (Do not lower than -25°C)

Formulation Liquid in PBS containing 50% glycerol, 0.5% BSA and 0.02% sodium azide.

| Basic Information

Clonality Polyclonal

| Immunogen Information

Immunogen Synthesized peptide derived from human PEF1 AA range: 109-159

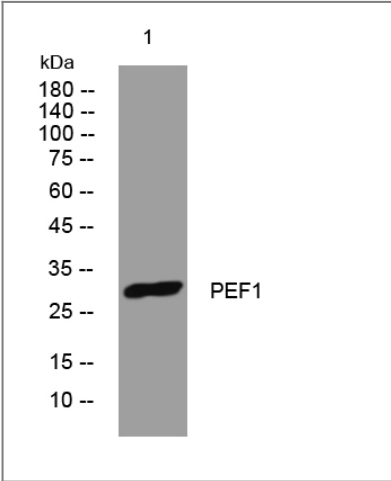
Specificity This antibody detects endogenous levels of PEF1 at Human/Mouse/Rat

| Target Information

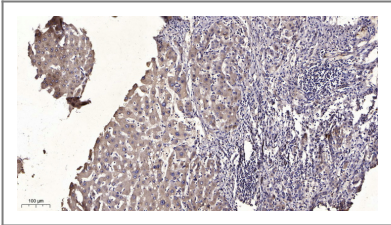
Gene name PEF1 ABP32 UNQ1845/PRO3573

Protein Name	PEF1		
	Organism	Gene ID	UniProt ID
	Human	553115 ;	Q9UBV8 ;
	Mouse	67898 ;	Q8BFY6 ;
	Rat	297900 ;	Q641Z8 ;
Cellular Localization	Cytoplasm . Endoplasmic reticulum . Membrane ; Peripheral membrane protein . Cytoplasmic vesicle, COPII-coated vesicle membrane ; Peripheral membrane protein . Membrane-associated in the presence of Ca(2+) (PubMed:11278427). Localizes to endoplasmic reticulum exit site (ERES) (By similarity). .		
Function	similarity:Contains 5 EF-hand domains.,subcellular location:Membrane-associated in the presence of Ca(2+).,subunit:Heterodimer; heterodimerizes with PDCD6/ALG2. Dissociates from PDCD6/ALG2 in presence of Ca(2+).,		

| Validation Data



Western blot analysis of lysates from Hela cells, primary antibody was diluted at 1:1000, 4°over night



Immunohistochemical analysis of paraffin-embedded human liver cancer. 1, Antibody was diluted at 1:200(4° overnight). 2, Tris-EDTA,pH9.0 was used for antigen retrieval. 3,Secondary antibody was diluted at 1:200(room temperature, 45min).

| Contact information

Orders: order@immunoway.com
Support: tech@immunoway.com
Telephone: 877-594-3616 (Toll Free), 408-747-0185
Website: <http://www.immunoway.com>
Address: 2200 Ringwood Ave San Jose, CA 95131 USA



Please scan the QR code
to access additional
product information:
PEF1 Rabbit pAb

For Research Use Only. Not for Use in Diagnostic Procedures.

[Antibody](#) | [ELISA Kits](#) | [Protein](#) | [Reagents](#)