

## F166B Rabbit pAb

CatalogNo: YT6564

### | Key Features

#### Host Species

- Rabbit

#### Reactivity

- Human, Mouse

#### Applications

- WB

#### MW

- 30kD (Calculated)

#### Isotype

- IgG

### | Recommended Dilution Ratios

WB 1:500-2000

### | Storage

#### Storage\*

-15°C to -25°C/1 year (Do not lower than -25°C)

#### Formulation

Liquid in PBS containing 50% glycerol, 0.5% BSA and 0.02% sodium azide.

### | Basic Information

#### Clonality

Polyclonal

### | Immunogen Information

#### Immunogen

Synthesized peptide derived from human F166B AA range: 64-114

#### Specificity

This antibody detects endogenous levels of F166B at Human/Mouse

### | Target Information

#### Gene name

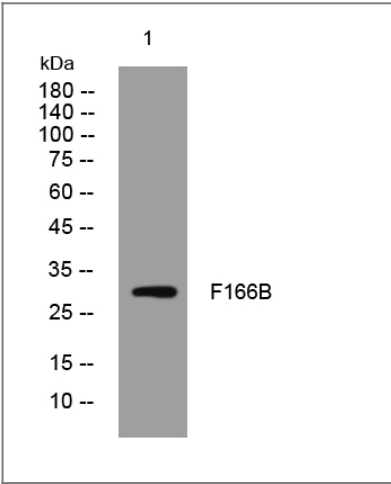
FAM166B

**Protein Name** F166B

Organism	Gene ID	UniProt ID
Human	<a href="#">730112</a> ;	<a href="#">A8MTA8</a> ;
Mouse	<a href="#">329831</a> ;	<a href="#">A2AIP0</a> ;

**Function** similarity:Belongs to the UPF0605 family.,

| Validation Data



Western blot analysis of lysates from HEK293 cells, primary antibody was diluted at 1:1000, 4°over night

| Contact information

Orders: order@immunoway.com  
Support: tech@immunoway.com  
Telephone: 877-594-3616 (Toll Free), 408-747-0185  
Website: http://www.immunoway.com  
Address: 2200 Ringwood Ave San Jose, CA 95131 USA



Please scan the QR code to access additional product information:  
**F166B Rabbit pAb**

For Research Use Only. Not for Use in Diagnostic Procedures.

[Antibody](#) | [ELISA Kits](#) | [Protein](#) | [Reagents](#)