

ZF161 Rabbit pAb

CatalogNo: YT6548

| Key Features

Host Species

- Rabbit

Reactivity

- Human, Mouse

Applications

- WB

MW

- 49kD (Calculated)

Isotype

- IgG

| Recommended Dilution Ratios

WB 1:500-2000

| Storage

Storage* -15°C to -25°C/1 year (Do not lower than -25°C)

Formulation Liquid in PBS containing 50% glycerol, 0.5% BSA and 0.02% sodium azide.

| Basic Information

Clonality Polyclonal

| Immunogen Information

Immunogen Synthesized peptide derived from human ZF161 AA range: 116-166

Specificity This antibody detects endogenous levels of ZF161 at Human/Mouse

| Target Information

Gene name ZFP161 ZBTB14 ZNF478

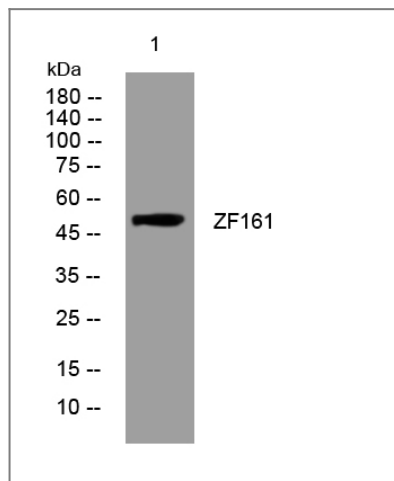
Protein Name ZF161

Organism	Gene ID	UniProt ID
Human	7541 ;	O43829 ;
Mouse	22666 ;	Q08376 ;

Cellular Localization Nucleus . Colocalizes with ZBTB21 in nucleus in HEK293 cells.

Function Domain:The BTB/POZ domain seems to direct the protein to discrete regions in the nucleus.,Function:Transcriptional repressor of c-Myc and thymidine kinase promoters (By similarity). Transcriptional activator of the dopamine transporter (DAT), binding it's promoter at the consensus sequence 5'-CCTGCACAGTTCACGGA-3'.,similarity:Belongs to the krueppel C2H2-type zinc-finger protein family.,similarity:Contains 1 BTB (POZ) domain.,similarity:Contains 5 C2H2-type zinc fingers.,

Validation Data



Western blot analysis of lysates from U2OS cells, primary antibody was diluted at 1:1000, 4°over night

Contact information

Orders: order@immunoway.com
Support: tech@immunoway.com
Telephone: 877-594-3616 (Toll Free), 408-747-0185
Website: <http://www.immunoway.com>
Address: 2200 Ringwood Ave San Jose, CA 95131 USA



Please scan the QR code to access additional product information:
ZF161 Rabbit pAb