

## GLDN Rabbit pAb

CatalogNo: YT6545

### | Key Features

#### Host Species

- Rabbit

#### Reactivity

- Human, Mouse, Rat

#### Applications

- WB

#### MW

- 61kD (Calculated)

#### Isotype

- IgG

### | Recommended Dilution Ratios

**WB 1:500-2000**

### | Storage

**Storage\*** -15°C to -25°C/1 year (Do not lower than -25°C)

**Formulation** Liquid in PBS containing 50% glycerol, 0.5% BSA and 0.02% sodium azide.

### | Basic Information

**Clonality** Polyclonal

### | Immunogen Information

**Immunogen** Synthesized peptide derived from human GLDN AA range: 461-511

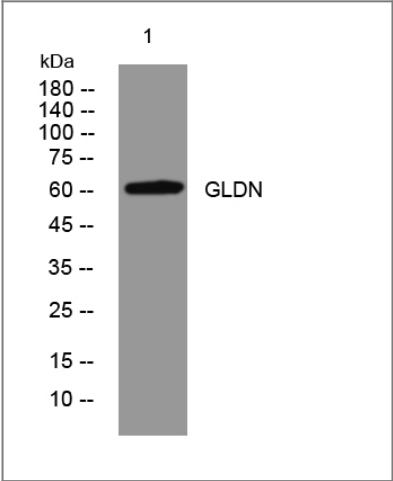
**Specificity** This antibody detects endogenous levels of GLDN at Human/Mouse/Rat

### | Target Information

**Gene name** GLDN COLM UNQ9339/PRO34011

Protein Name	GLDN		
	Organism	Gene ID	UniProt ID
	Human	<a href="#">342035;</a>	<a href="#">Q6ZMI3;</a>
	Mouse	<a href="#">235379;</a>	<a href="#">Q8BMF8;</a>
	Rat	<a href="#">315675;</a>	<a href="#">Q80WL1;</a>
Cellular Localization	Cell membrane ; Single-pass type II membrane protein . Cell projection, axon . Detected at the nodes of Ranvier. Detected at immature heminodes. . ; [Gliomedin shedded ectodomain]: Secreted . Secreted, extracellular space, extracellular matrix . Proteolytic processing gives rise to a soluble extracellular domain that is secreted. The gliomedin shedded ectodomain localizes to the nodes of Ranvier. .		
Tissue specificity	Specifically expressed in spinal cord, brain, placenta and sciatic nerve. More abundant in peripheral than central nervous system.		
Function	Domain:The olfactomedin-like domain mediates NFASC/neurofascin and NRCAM binding.,Function:Plays a role in the formation of the nodes of Ranvier along myelinated axons. Probable NRCAM and NFASC/neurofascin ligand which may provide a glial positional clue required for the proper molecular assembly of the nodes of Ranvier.,similarity:Contains 1 olfactomedin-like domain.,similarity:Contains 2 collagen-like domains.,subcellular location:Localizes to the nodes of Ranvier.,subunit:Interacts with NFASC/neurofascin and NRCAM.,tissue specificity:Specifically expressed in spinal cord, brain, placenta and sciatic nerve. More abundant in peripheral than central nervous system.,		

Validation Data



Western blot analysis of lysates from KB cells, primary antibody was diluted at 1:1000, 4°over night

Contact information

Orders: order@immunoway.com  
Support: tech@immunoway.com  
Telephone: 877-594-3616 (Toll Free), 408-747-0185  
Website: http://www.immunoway.com  
Address: 2200 Ringwood Ave San Jose, CA 95131 USA



Please scan the QR code  
to access additional  
product information:  
**GLDN Rabbit pAb**

---

For Research Use Only. Not for Use in Diagnostic Procedures.

[Antibody](#) | [ELISA Kits](#) | [Protein](#) | [Reagents](#)