

## NIT2 Rabbit pAb

CatalogNo: YT6539

### | Key Features

#### Host Species

- Rabbit

#### Reactivity

- Human, Mouse, Rat

#### Applications

- WB

#### MW

- 30kD (Calculated)

#### Isotype

- IgG

### | Recommended Dilution Ratios

WB 1:500-2000

### | Storage

**Storage\*** -15°C to -25°C/1 year (Do not lower than -25°C)

**Formulation** Liquid in PBS containing 50% glycerol, 0.5% BSA and 0.02% sodium azide.

### | Basic Information

**Clonality** Polyclonal

### | Immunogen Information

**Immunogen** Synthesized peptide derived from human NIT2 AA range: 200-250

**Specificity** This antibody detects endogenous levels of NIT2 at Human/Mouse/Rat

### | Target Information

**Gene name** NIT2 CUA002

Protein Name NIT2

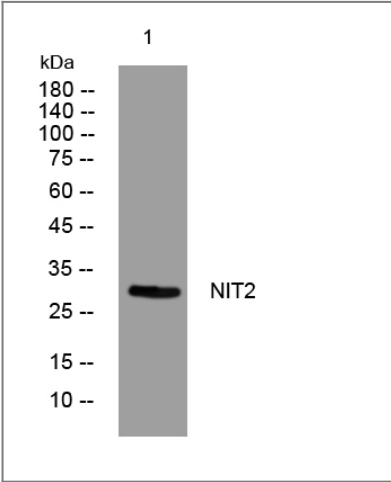
Organism	Gene ID	UniProt ID
Human	<a href="#">56954</a> ;	<a href="#">Q9NQR4</a> ;
Mouse	<a href="#">52633</a> ;	<a href="#">Q9JHW2</a> ;
Rat	<a href="#">288174</a> ;	<a href="#">Q497B0</a> ;

Cellular Localization Cytoplasm .

Tissue specificity Detected in fetal brain (at protein level). Ubiquitous. Detected in heart, brain, placenta, lung, liver, skeletal muscle, kidney, pancreas, prostate, spleen, thymus, prostate, testis, ovary, small intestine and colon.

Function Function:Overexpression decreases the colony-forming capacity of cultured cells by arresting cells in the G2 phase of the cell cycle.,mass spectrometry: PubMed:17488281,similarity:Belongs to the UPF0012 family.,similarity:Contains 1 CN hydrolase domain.,tissue specificity:Detected in fetal brain (at protein level). Ubiquitous. Detected in heart, brain, placenta, lung, liver, skeletal muscle, kidney, pancreas, prostate, spleen, thymus, prostate, testis, ovary, small intestine and colon.,

Validation Data



Western blot analysis of lysates from MCF-7 cells, primary antibody was diluted at 1:1000, 4°over night

Contact information

Orders: order@immunoway.com  
Support: tech@immunoway.com  
Telephone: 877-594-3616 (Toll Free), 408-747-0185  
Website: http://www.immunoway.com  
Address: 2200 Ringwood Ave San Jose, CA 95131 USA



Please scan the QR code to access additional product information:  
**NIT2 Rabbit pAb**

