

MID51 Rabbit pAb

CatalogNo: YT6538

Key Features

Host Species

- Rabbit

Reactivity

- Human, Mouse, Rat

Applications

- WB, ELISA, IHC

MW

- 51kD (Calculated)

Isotype

- IgG

Recommended Dilution Ratios

WB 1:500-2000

IHC 1:50-300

ELISA 1:2000-20000

Storage

Storage*

-15°C to -25°C/1 year (Do not lower than -25°C)

Formulation

Liquid in PBS containing 50% glycerol, 0.5% BSA and 0.02% sodium azide.

Basic Information

Clonality

Polyclonal

Immunogen Information

Immunogen

Synthesized peptide derived from human MID51 AA range: 93-143

Specificity

This antibody detects endogenous levels of MID51 at Human/Mouse/Rat

Target Information

Gene name

SMCR7L MID51 MIEF1

Protein Name MID51

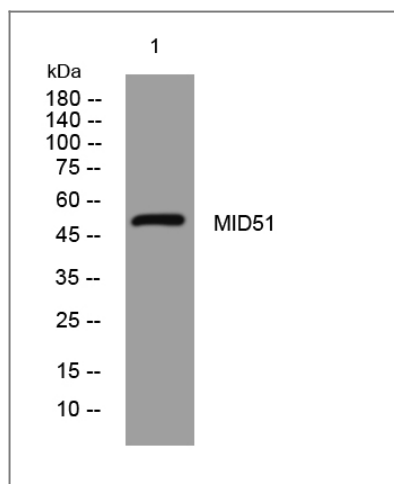
Organism	Gene ID	UniProt ID
Human	54471;	Q9NQG6;
Mouse	239555;	Q8BGV8;
Rat	315141;	Q5XIS8;

Cellular Localization Mitochondrion outer membrane ; Single-pass membrane protein .

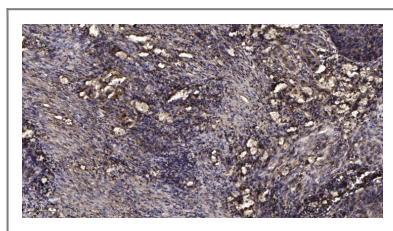
Tissue specificity Expression is relatively high in heart, skeletal muscle, pancreas and kidney.

Function similarity:Belongs to the SMCR7 family.,

Validation Data



Western blot analysis of lysates from U2OS cells, primary antibody was diluted at 1:1000, 4° over night



Immunohistochemical analysis of paraffin-embedded human Squamous cell carcinoma of lung. 1, Antibody was diluted at 1:200(4° overnight). 2, Tris-EDTA,pH9.0 was used for antigen retrieval. 3,Secondary antibody was diluted at 1:200(room temperature, 45min).

Contact information

Orders: order@immunoway.com
Support: tech@immunoway.com
Telephone: 877-594-3616 (Toll Free), 408-747-0185
Website: <http://www.immunoway.com>
Address: 2200 Ringwood Ave San Jose, CA 95131 USA



Please scan the QR code to access additional product information:
MID51 Rabbit pAb

