

RINI Rabbit pAb

CatalogNo: YT6528

Key Features

Host Species

- Rabbit

Reactivity

- Human, Mouse, Rat

Applications

- WB, IHC

MW

- 51kD (Calculated)

Isotype

- IgG

Recommended Dilution Ratios

WB 1:500-2000

IHC 1:50-300

Storage

Storage* -15°C to -25°C/1 year (Do not lower than -25°C)

Formulation Liquid in PBS containing 50% glycerol, 0.5% BSA and 0.02% sodium azide.

Basic Information

Clonality Polyclonal

Immunogen Information

Immunogen Synthesized peptide derived from human RINI AA range: 273-323

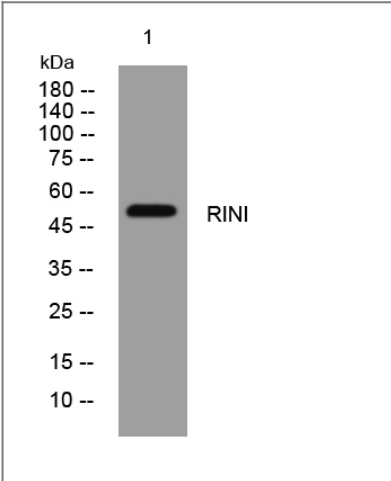
Specificity This antibody detects endogenous levels of RINI at Human/Mouse/Rat

Target Information

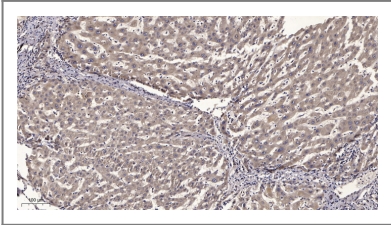
Gene name RNH1 PRI RNH

Protein Name	RINI		
	Organism	Gene ID	UniProt ID
	Human	6050;	P13489;
	Mouse	107702;	Q91VI7;
	Rat	100360501;	P29315;
Cellular Localization	Cytoplasm.		
Function	Function:Inhibitor of pancreatic RNase and angiogenin. May also function in the modulation of cellular activities.,PTM:At least 30 of the 32 cysteine residues are in the reduced form.,PTM:The N-terminus is blocked.,similarity:Contains 15 LRR (leucine-rich) repeats.,subunit:Forms a tight one-to-one complex with the RNase.,		

| Validation Data



Western blot analysis of lysates from PC-12 cells, primary antibody was diluted at 1:1000, 4°over night



Immunohistochemical analysis of paraffin-embedded human liver cancer. 1, Antibody was diluted at 1:200(4° overnight). 2, Tris-EDTA,pH9.0 was used for antigen retrieval. 3,Secondary antibody was diluted at 1:200(room temperature, 45min).

| Contact information

Orders: order@immunoway.com
Support: tech@immunoway.com
Telephone: 877-594-3616 (Toll Free), 408-747-0185
Website: http://www.immunoway.com
Address: 2200 Ringwood Ave San Jose, CA 95131 USA



Please scan the QR code
to access additional
product information:
RINI Rabbit pAb

For Research Use Only. Not for Use in Diagnostic Procedures.

[Antibody](#) | [ELISA Kits](#) | [Protein](#) | [Reagents](#)