

ZN333 Rabbit pAb

CatalogNo: YT6500

| Key Features

Host Species

- Rabbit

Reactivity

- Human

Applications

- WB

MW

- 73kD (Calculated)

Isotype

- IgG

| Recommended Dilution Ratios

WB 1:500-2000

| Storage

Storage* -15°C to -25°C/1 year(Do not lower than -25°C)

Formulation Liquid in PBS containing 50% glycerol, 0.5% BSA and 0.02% sodium azide.

| Basic Information

Clonality Polyclonal

| Immunogen Information

Immunogen Synthesized peptide derived from human ZN333 AA range: 22-72

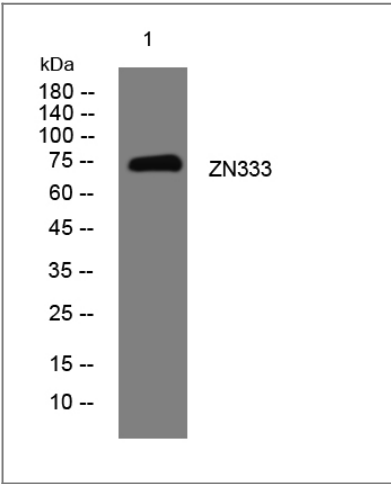
Specificity This antibody detects endogenous levels of ZN333 at Human

| Target Information

Gene name ZNF333 KIAA1806

Protein Name	ZN333		
	Organism	Gene ID	UniProt ID
	Human	84449 ;	Q96JL9 ;
Cellular Localization	Nucleus .		
Tissue specificity	Highly expressed in heart.		
Function	Function:May be involved in transcriptional regulation.,similarity:Belongs to the krueppel C2H2-type zinc-finger protein family.,similarity:Contains 1 KRAB domain.,similarity:Contains 10 C2H2-type zinc fingers.,similarity:Contains 2 KRAB domains.,tissue specificity:Highly expressed in heart.,		

| Validation Data



Western blot analysis of lysates from MCF-7 cells, primary antibody was diluted at 1:1000, 4°over night

| Contact information

Orders: order@immunoway.com

Support: tech@immunoway.com

Telephone: 877-594-3616 (Toll Free), 408-747-0185

Website: http://www.immunoway.com

Address: 2200 Ringwood Ave San Jose, CA 95131 USA



Please scan the QR code to access additional product information:

ZN333 Rabbit pAb