

CWC15 Rabbit pAb

CatalogNo: YT6485

| Key Features

Host Species

- Rabbit

Reactivity

- Human, Mouse, Rat

Applications

- WB

MW

- 25kD (Calculated)

Isotype

- IgG

| Recommended Dilution Ratios

WB 1:500-2000

| Storage

Storage* -15°C to -25°C/1 year (Do not lower than -25°C)

Formulation Liquid in PBS containing 50% glycerol, 0.5% BSA and 0.02% sodium azide.

| Basic Information

Clonality Polyclonal

| Immunogen Information

Immunogen Synthesized peptide derived from human CWC15 AA range: 33-83

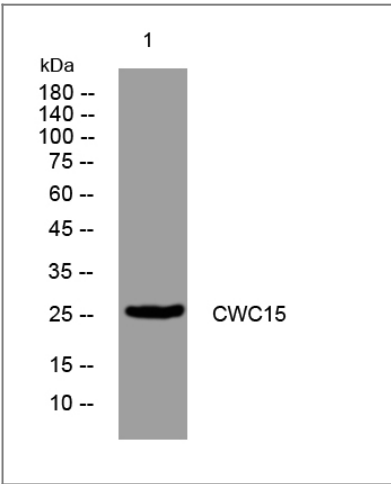
Specificity This antibody detects endogenous levels of CWC15 at Human/Mouse/Rat

| Target Information

Gene name CWC15 C11orf5 AD-002 HSPC148

Protein Name	CWC15		
	Organism	Gene ID	UniProt ID
	Human	51503 ;	Q9P013 ;
	Mouse	66070 ;	Q9JHS9 ;
	Rat	300361 ;	Q5BJP2 ;
Cellular Localization	Nucleus .		
Function	Caution:Has been termed C11orf5 (PubMed:10873569), but is not the official C11orf5 as defined by HGNC.,Function:Involved in pre-mRNA splicing.,similarity:Belongs to the CWC15 family.,		

Validation Data



Western blot analysis of lysates from PC-12 cells, primary antibody was diluted at 1:1000, 4°over night

Contact information

Orders: order@immunoway.com
 Support: tech@immunoway.com
 Telephone: 877-594-3616 (Toll Free), 408-747-0185
 Website: <http://www.immunoway.com>
 Address: 2200 Ringwood Ave San Jose, CA 95131 USA



Please scan the QR code
 to access additional
 product information:
CWC15 Rabbit pAb