

NPPL3 Rabbit pAb

CatalogNo: YT6476

Key Features

Host Species

- Rabbit

Reactivity

- Human

Applications

- WB

MW

- 116kD (Calculated)

Isotype

- IgG

Recommended Dilution Ratios

WB 1:500-2000

Storage

Storage* -15°C to -25°C/1 year(Do not lower than -25°C)

Formulation Liquid in PBS containing 50% glycerol, 0.5% BSA and 0.02% sodium azide.

Basic Information

Clonality Polyclonal

Immunogen Information

Immunogen Synthesized peptide derived from human NPPL3 AA range: 831-881

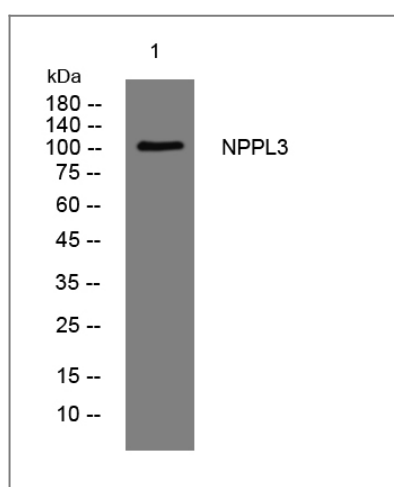
Specificity This antibody detects endogenous levels of NPPL3 at Human

Target Information

Gene name NPIPL3 KIAA0220

Protein Name	NPPL3		
	Organism	Gene ID	UniProt ID
	Human	23117 ;	Q92617 ;
Cellular Localization	Membrane ; Single-pass membrane protein .		
Function	Caution:Could be the product of a pseudogene.,similarity:Belongs to the NPIP family.,		

Validation Data



Western blot analysis of lysates from AD293 cells, primary antibody was diluted at 1:1000, 4°over night

Contact information

Orders: order@immunoway.com
 Support: tech@immunoway.com
 Telephone: 877-594-3616 (Toll Free), 408-747-0185
 Website: <http://www.immunoway.com>
 Address: 2200 Ringwood Ave San Jose, CA 95131 USA



Please scan the QR code to access additional product information:
NPPL3 Rabbit pAb

For Research Use Only. Not for Use in Diagnostic Procedures.

[Antibody](#) | [ELISA Kits](#) | [Protein](#) | [Reagents](#)