

ATS6 Rabbit pAb

CatalogNo: YT6475

| Key Features

Host Species

- Rabbit

Reactivity

- Human

Applications

- WB

MW

- 123kD (Calculated)

Isotype

- IgG

| Recommended Dilution Ratios

WB 1:500-2000

| Storage

Storage* -15°C to -25°C/1 year(Do not lower than -25°C)

Formulation Liquid in PBS containing 50% glycerol, 0.5% BSA and 0.02% sodium azide.

| Basic Information

Clonality Polyclonal

| Immunogen Information

Immunogen Synthesized peptide derived from human ATS6 AA range: 989-1039

Specificity This antibody detects endogenous levels of ATS6 at Human

| Target Information

Gene name ADAMTS6

Protein Name ATS6

Organism

Human

Gene ID

[11174](#);

UniProt ID

[Q9UKP5](#);

**Cellular
Localization**

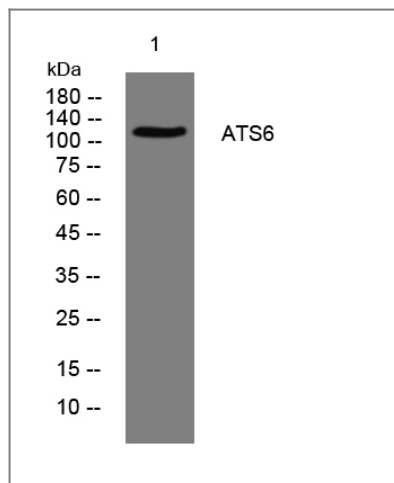
Secreted, extracellular space, extracellular matrix .

Tissue specificity Expressed at low levels in placenta and barely detectable in a number of other tissues.

Function

cofactor: Binds 1 zinc ion per subunit., Domain: The spacer domain and the TSP type-1 domains are important for a tight interaction with the extracellular matrix., induction: Isoform 1 and 2 expressions are up-regulated by TNF-alpha in retinal pigment epithelial cells., PTM: The precursor is cleaved by a furin endopeptidase., similarity: Contains 1 disintegrin domain., similarity: Contains 1 peptidase M12B domain., similarity: Contains 1 PLAC domain., similarity: Contains 5 TSP type-1 domains., tissue specificity: Expressed at low levels in placenta and barely detectable in a number of other tissues.,

Validation Data



Western blot analysis of lysates from A431 cells, primary antibody was diluted at 1:1000, 4° over night

Contact information

Orders: order@immunoway.com
Support: tech@immunoway.com
Telephone: 877-594-3616 (Toll Free), 408-747-0185
Website: http://www.immunoway.com
Address: 2200 Ringwood Ave San Jose, CA 95131 USA



Please scan the QR code to access additional product information:
ATS6 Rabbit pAb