

MPPB Rabbit pAb

CatalogNo: YT6459

Key Features

Host Species

- Rabbit

Reactivity

- Human, Mouse, Rat

Applications

- WB, IHC

MW

- 54kD (Calculated)

Isotype

- IgG

Recommended Dilution Ratios

WB 1:500-2000

IHC 1:50-300

Storage

Storage* -15°C to -25°C/1 year (Do not lower than -25°C)

Formulation Liquid in PBS containing 50% glycerol, 0.5% BSA and 0.02% sodium azide.

Basic Information

Clonality Polyclonal

Immunogen Information

Immunogen Synthesized peptide derived from human MPPB AA range: 92-142

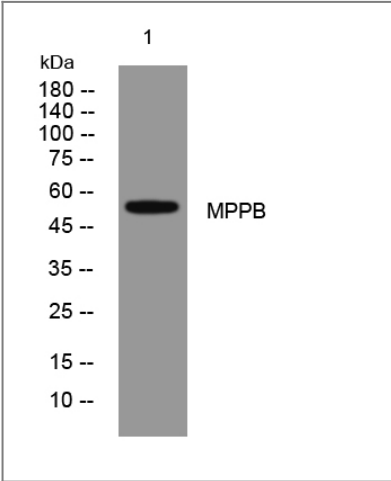
Specificity This antibody detects endogenous levels of MPPB at Human/Mouse/Rat

Target Information

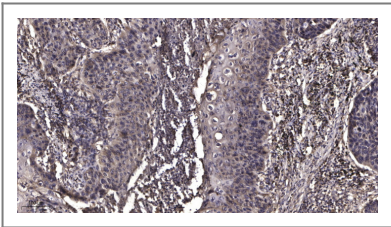
Gene name PMPCB MPPB

Protein Name	MPPB		
	Organism	Gene ID	UniProt ID
	Human	9512;	075439;
	Mouse	73078;	Q9CXT8;
	Rat	64198;	Q03346;
Cellular Localization	Mitochondrion matrix .		
Function	Catalytic activity:Release of N-terminal transit peptides from precursor proteins imported into the mitochondrion, typically with Arg in position P2.,cofactor:Binds 1 zinc ion per subunit.,Function:Cleaves presequences (transit peptides) from mitochondrial protein precursors.,similarity:Belongs to the peptidase M16 family.,subunit:Heterodimer of alpha and beta subunits.,		

| Validation Data



Western blot analysis of lysates from 293T cells, primary antibody was diluted at 1:1000, 4°over night



Immunohistochemical analysis of paraffin-embedded human Squamous cell carcinoma of lung. 1, Antibody was diluted at 1:200(4° overnight). 2, Tris-EDTA,pH9.0 was used for antigen retrieval. 3,Secondary antibody was diluted at 1:200(room temperature, 45min).

| Contact information

Orders: order@immunoway.com
Support: tech@immunoway.com
Telephone: 877-594-3616 (Toll Free), 408-747-0185
Website: http://www.immunoway.com
Address: 2200 Ringwood Ave San Jose, CA 95131 USA



Please scan the QR code
to access additional
product information:
MPPB Rabbit pAb

For Research Use Only. Not for Use in Diagnostic Procedures.

[Antibody](#) | [ELISA Kits](#) | [Protein](#) | [Reagents](#)