

## DYH2 Rabbit pAb

CatalogNo: YT6443

### Key Features

#### Host Species

- Rabbit

#### Reactivity

- Human, Mouse

#### Applications

- IHC, IF

#### MW

- 487kD (Calculated)

#### Isotype

- IgG

### Recommended Dilution Ratios

IHC 1:50-200

IF 1:50-200

### Storage

**Storage\*** -15°C to -25°C/1 year (Do not lower than -25°C)

**Formulation** Liquid in PBS containing 50% glycerol, 0.5% BSA and 0.02% sodium azide.

### Basic Information

**Clonality** Polyclonal

### Immunogen Information

**Immunogen** Synthesized peptide derived from human DYH2 AA range: 329-379

**Specificity** This antibody detects endogenous levels of DYH2 at Human/Mouse

### Target Information

**Gene name** DNAH2 DNAHC2 DNHD3 KIAA1503

**Protein Name** DYH2

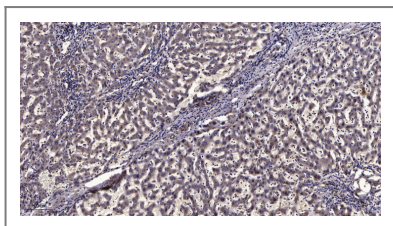
Organism	Gene ID	UniProt ID
Human	<a href="#">146754</a> ;	<a href="#">Q9P225</a> ;
Mouse		<a href="#">P0C6F1</a> ;

**Cellular Localization** Cytoplasm, cytoskeleton, cilium axoneme . Cytoplasm, cytoskeleton, flagellum axoneme .

**Tissue specificity** Expressed primarily in trachea and testis, 2 tissues containing axonemal structures. Also expressed in lung. Expressed in spermatozoa (at protein level) (PubMed:31178125).

**Function** Domain:Dynein heavy chains probably consist of an N-terminal stem (which binds cargo and interacts with other dynein components), and the head or motor domain. The motor contains six tandemly-linked AAA domains in the head, which form a ring. A stalk-like structure (formed by two of the coiled coil domains) protrudes between AAA 4 and AAA 5 and terminates in a microtubule-binding site. A seventh domain may also contribute to this ring; it is not clear whether the N-terminus or the C-terminus forms this extra domain. There are four well-conserved and two non-conserved ATPase sites, one per AAA domain. Probably only one of these (within AAA 1) actually hydrolyzes ATP, the others may serve a regulatory function.,Function:Force generating protein of respiratory cilia. Produces force towards the minus ends of microtubules. Dynein has ATPase activity; the force-producing power stroke is thought to occur on release of ADP. Involved in sperm motility; implicated in sperm flagellar assembly.,similarity:Belongs to the dynein heavy chain family.,similarity:Contains 5 LRR (leucine-rich) repeats.,similarity:Contains 5 TPR repeats.,subunit:Consists of at least two heavy chains and a number of intermediate and light chains.,tissue specificity:Expressed primarily in trachea and testis, 2 tissues containing axonemal structures. Also expressed in lung.,

## Validation Data



Immunohistochemical analysis of paraffin-embedded human liver cancer. 1, Antibody was diluted at 1:200(4° overnight). 2, Tris-EDTA,pH9.0 was used for antigen retrieval. 3,Secondary antibody was diluted at 1:200(room temperature, 45min).

## Contact information

Orders: [order@immunoway.com](mailto:order@immunoway.com)  
Support: [tech@immunoway.com](mailto:tech@immunoway.com)  
Telephone: 877-594-3616 (Toll Free), 408-747-0185  
Website: <http://www.immunoway.com>  
Address: 2200 Ringwood Ave San Jose, CA 95131 USA



Please scan the QR code to access additional product information:  
**DYH2 Rabbit pAb**

