

HMBX1 Rabbit pAb

CatalogNo: YT6436

| Key Features

Host Species

- Rabbit

Reactivity

- Human, Mouse

Applications

- WB

MW

- 46kD (Calculated)

Isotype

- IgG

| Recommended Dilution Ratios

WB 1:500-2000

| Storage

Storage*

-15°C to -25°C/1 year (Do not lower than -25°C)

Formulation

Liquid in PBS containing 50% glycerol, 0.5% BSA and 0.02% sodium azide.

| Basic Information

Clonality

Polyclonal

| Immunogen Information

Immunogen

Synthesized peptide derived from human HMBX1 AA range: 169-219

Specificity

This antibody detects endogenous levels of HMBX1 at Human/Mouse

| Target Information

Gene name

HMBX1

Protein Name HMBX1

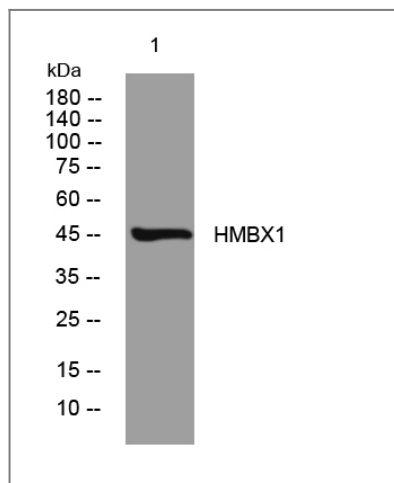
Organism	Gene ID	UniProt ID
Human	79618 ;	Q6NT76 ;
Mouse	219150 ;	Q8BJA3 ;

Cellular Localization Nucleus . Cytoplasm . Chromosome, telomere . Nucleus, Cajal body . Nucleus, PML body . Predominantly detected in cytoplasm (PubMed:16825764, PubMed:19728927). Localizes in a dynamic manner to actively processed telomeres (PubMed:23685356). Localizes to the periphery of Cajal bodies (PubMed:23685356). Associates with PML nuclear bodies in telomerase-negative cells (PubMed:23813958). .; [Isoform 5]: Nucleus . Cytoplasm .

Tissue specificity Ubiquitous. Detected in pancreas, brain, spleen, placenta, prostate, thymus, liver, heart, bone marrow, skeletal muscle, stomach, uterus, testis, kidney, ovary, colon, lung, cardiac muscle and thyroid gland.

Function Function:Putative transcription factor .,similarity:Contains 1 homeobox DNA-binding domain.,

Validation Data



Western blot analysis of lysates from HpeG2 cells, primary antibody was diluted at 1:1000, 4° over night

Contact information

Orders: order@immunoway.com
Support: tech@immunoway.com
Telephone: 877-594-3616 (Toll Free), 408-747-0185
Website: <http://www.immunoway.com>
Address: 2200 Ringwood Ave San Jose, CA 95131 USA



Please scan the QR code to access additional product information:
HMBX1 Rabbit pAb

