

LRC26 Rabbit pAb

CatalogNo: YT6420

Key Features

Host Species

- Rabbit

Reactivity

- Human, Mouse, Rat

Applications

- WB, IHC

MW

- 37kD (Calculated)

Isotype

- IgG

Recommended Dilution Ratios

WB 1:500-2000

IHC 1:50-300

Storage

Storage* -15°C to -25°C/1 year (Do not lower than -25°C)

Formulation Liquid in PBS containing 50% glycerol, 0.5% BSA and 0.02% sodium azide.

Basic Information

Clonality Polyclonal

Immunogen Information

Immunogen Synthesized peptide derived from human LRC26 AA range: 163-213

Specificity This antibody detects endogenous levels of LRC26 at Human/Mouse/Rat

Target Information

Gene name LRRC26 CAPC

Protein Name LRC26

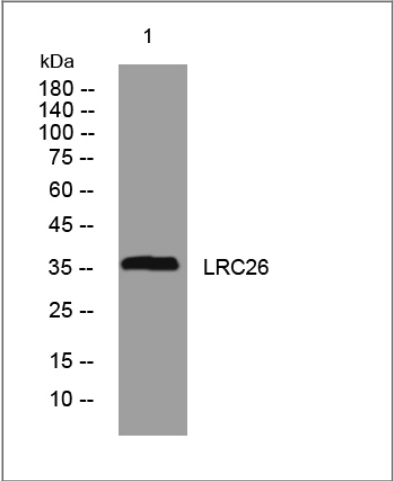
Organism	Gene ID	UniProt ID
Human	389816 ;	Q2I0M4 ;
Mouse	227618 ;	Q91W20 ;
Rat	311803 ;	Q6P7C4 ;

Cellular Localization Cell membrane; Single-pass type I membrane protein. Cytoplasm, cytoskeleton. Localizes to the cytoplasm when expressed at high levels. .

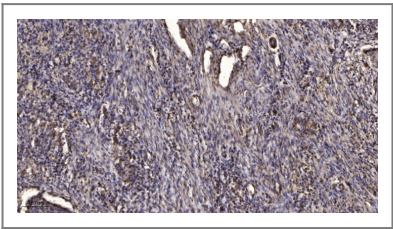
Tissue specificity Isoform 1 is expressed highly in normal prostate and salivary gland, very weakly in colon, pancreas, and intestine, and not at all in other tissues. Isoform 1 is expressed highly in many cancer cell lines and in breast cancer, pancreatic cancer and colon cancer. Isoform 2 is expressed in cancer cell lines.

Function similarity:Contains 6 LRR (leucine-rich) repeats.,subcellular location:Although predicted to be a single-pass type I membrane protein, this protein localizes to the cytoplasm when expressed at high levels (PubMed:15164053).,tissue specificity:Expressed highly in normal prostate and salivary gland, very weakly in colon, pancreas, and intestine, and not at all in other tissues. Expressed highly in many cancer cell lines and in breast cancer, pancreatic cancer and colon cancer.,

Validation Data



Western blot analysis of lysates from SH-SY5Y cells, primary antibody was diluted at 1:1000, 4° over night



Immunohistochemical analysis of paraffin-embedded human Squamous cell carcinoma of lung. 1, Antibody was diluted at 1:200(4° overnight). 2, Tris-EDTA,pH9.0 was used for antigen retrieval. 3,Secondary antibody was diluted at 1:200(room temperature, 45min).

Contact information

Orders: order@immunoway.com
Support: tech@immunoway.com
Telephone: 877-594-3616 (Toll Free), 408-747-0185
Website: http://www.immunoway.com
Address: 2200 Ringwood Ave San Jose, CA 95131 USA



Please scan the QR code
to access additional
product information:
LRC26 Rabbit pAb

For Research Use Only. Not for Use in Diagnostic Procedures.

[Antibody](#) | [ELISA Kits](#) | [Protein](#) | [Reagents](#)