

## KCD15 Rabbit pAb

CatalogNo: YT6416

### Key Features

#### Host Species

- Rabbit

#### Reactivity

- Human, Mouse

#### Applications

- WB, IHC

#### MW

- 31kD (Calculated)

#### Isotype

- IgG

### Recommended Dilution Ratios

WB 1:500-2000

IHC 1:50-300

### Storage

**Storage\*** -15°C to -25°C/1 year (Do not lower than -25°C)

**Formulation** Liquid in PBS containing 50% glycerol, 0.5% BSA and 0.02% sodium azide.

### Basic Information

**Clonality** Polyclonal

### Immunogen Information

**Immunogen** Synthesized peptide derived from human KCD15 AA range: 201-251

**Specificity** This antibody detects endogenous levels of KCD15 at Human/Mouse

### Target Information

**Gene name** KCTD15

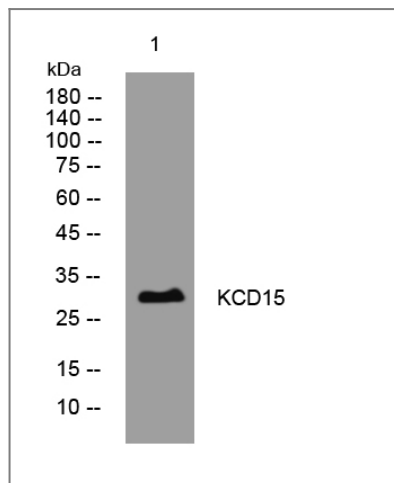
**Protein Name** KCD15

| Organism | Gene ID                 | UniProt ID              |
|----------|-------------------------|-------------------------|
| Human    | <a href="#">79047;</a>  | <a href="#">Q96SI1;</a> |
| Mouse    | <a href="#">233107;</a> | <a href="#">Q8K0E1;</a> |

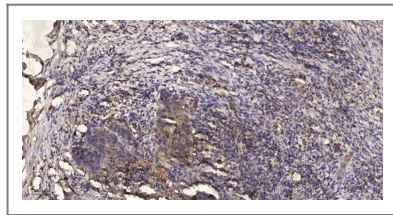
**Cellular Localization** Nucleus . In the brain, localizes to the arcuate hypothalamic nucleus, the ventromedial hypothalamic nucleus and the accumbens nucleus of the ventral striatum. .

**Function** similarity:Contains 1 BTB (POZ) domain.,

## Validation Data



Western blot analysis of lysates from U2OS cells, primary antibody was diluted at 1:1000, 4° over night



Immunohistochemical analysis of paraffin-embedded human Squamous cell carcinoma of lung. 1, Antibody was diluted at 1:200(4° overnight). 2, Tris-EDTA, pH 9.0 was used for antigen retrieval. 3, Secondary antibody was diluted at 1:200(room temperature, 45min).

## Contact information

Orders: [order@immunoway.com](mailto:order@immunoway.com)  
Support: [tech@immunoway.com](mailto:tech@immunoway.com)  
Telephone: 877-594-3616 (Toll Free), 408-747-0185  
Website: <http://www.immunoway.com>  
Address: 2200 Ringwood Ave San Jose, CA 95131 USA



Please scan the QR code to access additional product information:  
**KCD15 Rabbit pAb**

